

Elkhart County Leaf Management



What are voluntary, cost effective methods to reduce the amount of leaf burning occurring in unincorporated Elkhart County?



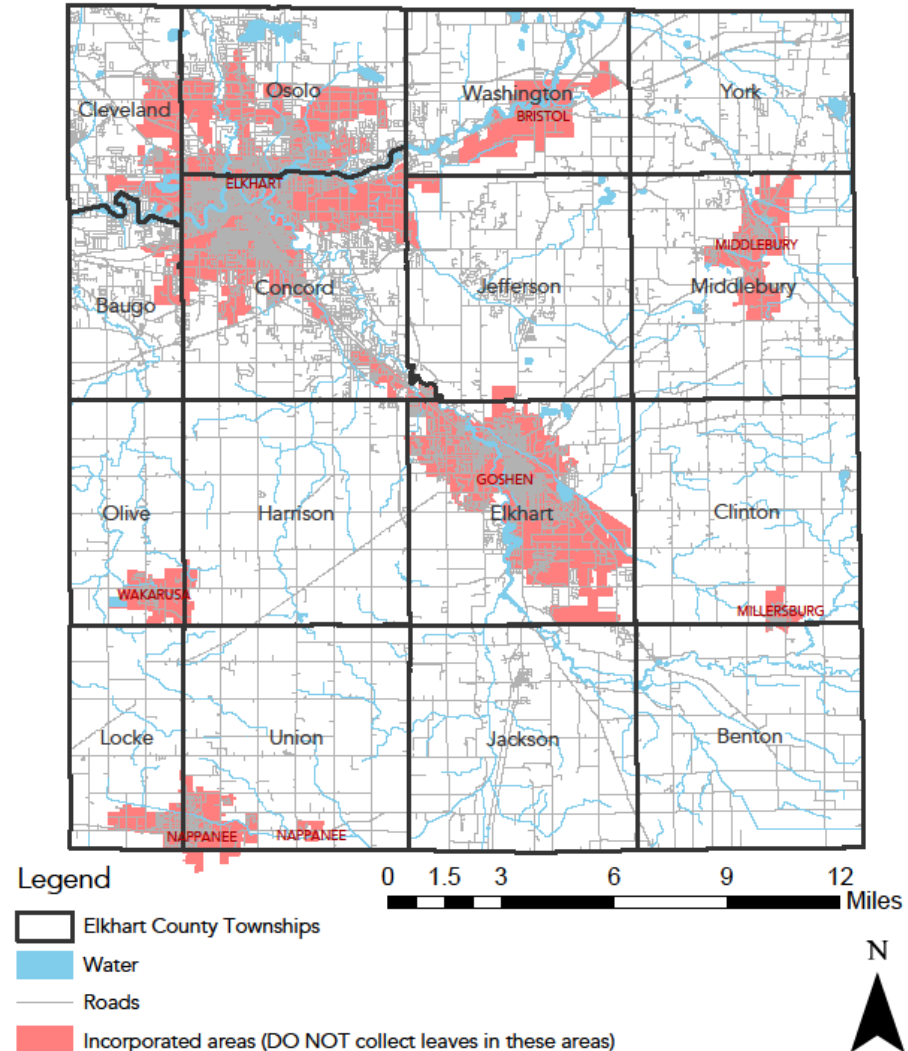
Leaf Management Pilot, 2018



Leaf Task Force Public Meetings Pilot programs

- Leaf collection competition
- Compost program
- Web site
- Landscaper list
- K-12 education

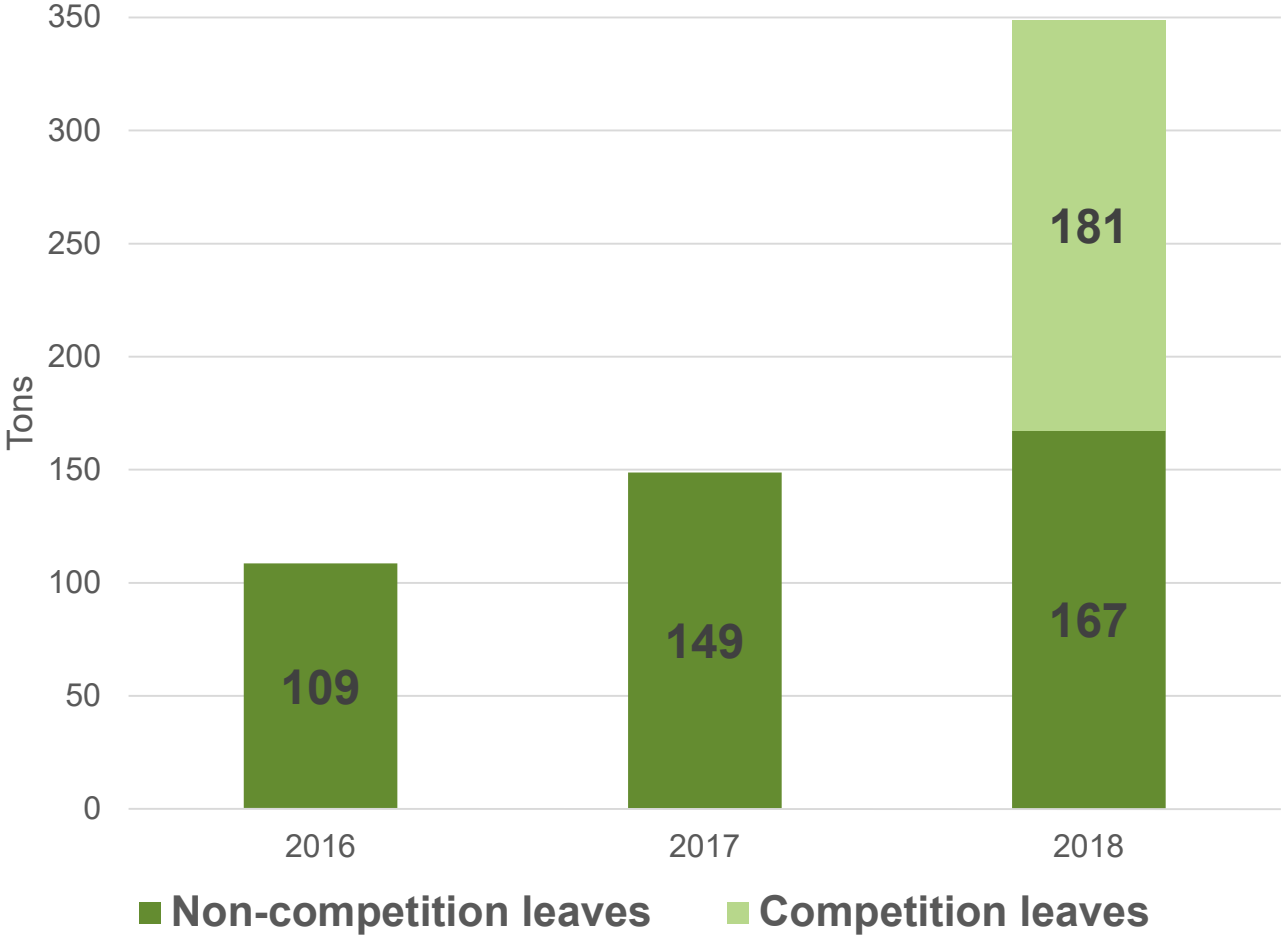
Elkhart County Leaf Collection Competition
Leaf Collection Areas



Leaf Collection Competition – Fall 2018



Leaves brought to the Elkhart County Landfill, 2016 -2018



Leaf Collection Competition – Fall 2018



20 teams reached the 1 ton threshold

Top 4 Teams	Leaf Tonnage	Prize Money
1. Prairie Camp	39 tons	\$9,982
2. Yellow Creek MYF	31 tons	\$7,986
3. Sunnyside Mennonite Church	19 tons	\$4,891
4. Central Christian Church	18 tons	\$4,642

ELKHART COUNTY LANDFILL & SOLID WASTE MANAGEMENT DISTRICT

- Home
- Leaves & Yard Waste
- Landfill
- Residential Recycling
- Green Schools Initiative
- Hazardous Waste
- Contact Us

Compost Program
Information Outreach Program
Landscaper List
Leaf Collection Competition
Student Education Program

4 Seasons Landscape, Lawn Care & Snow Removal, LLC	BB Landscaping and Construction	Legendary Lawn Care LLC	Karacson Lawn & Landscape Care Co.
AJL Total Property Maintenance	Ayala Landscaping	Linton's	Earth Care Lawn Service



Before you burn... obey the law!

The Indiana Department of Environmental Management (IDEM) maintains 326 IAC 4-1. This rule covers open burning. The rule says: "Open burning is prohibited except as allowed in this rule."

What kind of open burning is allowed?

Elkhart County citizens can burn:

- Clean wood products from your yard (i.e., leaves, twigs, brush).
- Recreational fires (though these cannot be used for disposal purposes).
- Vegetation from a farm, orchard, nursery, or drainage ditch.

But you must follow these conditions:

- Fires must be in a non-combustible container that is sufficiently vented, has enclosed sides and a bottom.
- Fires must be attended at all times.
- Fires must be during daylight hours. (Recreational fires are allowed after sunset, but cannot be used for disposal purposes.)
- Fires must not be during high winds or temperature inversions.
- Fires must be put out if it creates a fire hazard, nuisance or public health threat.
- Private residential homes only. No apartments, condominiums, or businesses.

It is illegal to burn:

- Wood products coated with stain, paint, glue, or other coatings
- Household waste, plastic, batteries, rubber, disposable diapers

Use common sense. When in doubt, don't burn! Be considerate of your neighbors. You aren't 100% that all conditions being met, the burn.

For more information

- IDEM Open Burning Web page: <http://www.in.gov/idem/airquality/2411.htm>
- Elkhart County Leaf Management Web page: <http://www.in.gov/elkhartcounty/swmd/>
- To report inappropriate outdoor burning, please contact the Indiana Department of Environmental Management at (800)451-6027 x3 or at <https://www.in.gov/indem/>

Before you burn... consider the alternatives!

Open burning damages property!

Did you know? In Vanderburgh County in 2017, a house fire caused by leaf burning resulted in a total loss of the house. This could happen in Elkhart County, too!

Open burning impacts Elkhart County residents!

Numerous residents in Elkhart County have told us how open burning in Elkhart County affects their daily lives. By pursuing alternatives to leaf burning, you will be contributing to a better quality of life for yourself, your neighbors, and local businesses.

- Many residents with health problems are forced to leave Elkhart County when leaf burning starts. Even residents without health problems are bothered by burning leaves ... as it is harmful to all of us.
- Businesses can lose income because of open burning. Smoke from leaf burning provides a bothersome environment that discourages business transactions. Some businesses even report having to close when the smoke is too thick.
- Fire departments have to respond to leaf fires that go out of control, which is a concern for firefighters and their families.
- In schools and other buildings that draw in air from the outside, leaf smoke is brought indoors, making it harder for people inside the buildings to work, learn, and play.
- [Impact to healthcare system: Do we have anything to share here?]

So, what's the best way to manage leaves and yard waste?

- Compost your leaves, grass, weeds, brush, kitchen scraps, and other organic waste.
- Mulch leaves into your lawn.
- Bag your leaves into your lawn.
- Elkhart, IN 46517.
- Hire a local landscaper to help you manage your yard waste.
- If you must burn, be sure you are burning in accordance with the law.

For more information:
www.elkhartcountyswmd.com