

Bremen

2022 - 2026

PARKS MASTER PLAN

ACKNOWLEDGMENTS

The Bremen 2022-2026 Parks Master Plan would not have been possible without the guidance, direction, and input from Bremen residents, the Bremen Parks Board, and the Steering Committee.

PARKS BOARD MEMBERS:

Brita Miller, *President*
Jeff Byrd, *Vice-President*
Dr. Blaine Maxson, *Secretary*
Greg Miller, *Member*
Tim Orcutt, *Member*

STEERING COMMITTEE MEMBERS:

| | |
|------------------|---|
| Trend Weldy | <i>Town of Bremen Director of Operations</i> |
| Mike Leman | <i>Town Council Member/Parks Board Liaison</i> |
| Brian Main | <i>Town of Bremen Parks and Recreation Superintendent</i> |
| Diana Humfleet | <i>Bremen High School Student</i> |
| James Wordleman | <i>Bremen High School Student</i> |
| Jessica Krallman | <i>Bremen Resident</i> |
| Sue Butzer | <i>Bremen Resident</i> |
| Gerald Yoder | <i>Bremen Resident</i> |
| Lindsey Fanning | <i>Bremen Resident</i> |
| Holly Heller | <i>Bremen Resident</i> |



TABLE OF CONTENTS

| | |
|--|-----------|
| 1. INTRODUCTION | 1 |
| Purpose | 2 |
| Definition of the Planning Area | 2 |
| Bremen Parks & Recreation Department | 2 |
| Parks Board | 3 |
| Local & Regional Planning Efforts | 4 |
| 2. EXISTING CONDITIONS | 7 |
| Natural Features and Landscape | 7 |
| Man-Made, Historical & Cultural Features | 8 |
| Socioeconomic Factors | 10 |
| 3. PARKS & RECREATION FACILITIES | 15 |
| Facilities Location Map | 17 |
| Bremen Proposed Trail Network | 19 |
| Other Recreational Amenities | 20 |
| 4. ADA COMPLIANCE & ACCESSIBILITY | 21 |
| Overview | 21 |
| Statement of Accessibility | 21 |
| Bremen Parks Accessibility Review | 22 |
| 5. PUBLIC PARTICIPATION | 25 |
| Community Engagement | 25 |
| Steering Committee Meetings | 26 |
| Public Input Survey | 26 |
| Stakeholder Interviews | 29 |
| Prior Community Engagement Activities | 29 |
| Public Comment of Draft Plan | 30 |
| 6. NEEDS & GAP ANALYSIS | 31 |
| Acreage & Parks Level of Service Metrics | 31 |
| Gap Analysis | 32 |
| Major Needs | 33 |
| 7. PRIORITY ACTION PROGRAM | 35 |
| Priority Action Schedule | 36 |
| All Other Action Strategies | 39 |
| Implementation and Funding Opportunities | 41 |
| Grant Programs | 41 |

1



Introduction

Bremen embodies what it means to be a high-quality hometown. Bremen is a vibrant small town situated at the intersection of metropolitan life in South Bend/Mishawaka and rural Marshall County. It maintains its small-town charm with the high-quality amenities to attract the larger regional workforce. Bremen offers a strong history of producing agricultural and manufactured goods that helped provide a high quality of life in the past. That same quality of life is present in Bremen even as the regional and global economies shift and change. Bremen understands maintaining this high quality of life and place is critical to retain its population, continue economic growth, and preserve its heritage.

Bremen offers a variety of unique qualities as a town park system. The town experiences an influx of visitors for its two major events each year: The Fireman's Festival and The Holy Walk. This provides exposure for visitors to experience Bremen and its parks in fun and interesting ways. Bremen is home to important historical features such as the historic water standpipe, the renovated railroad depot building, and neighboring historic homes. Bremen continues to celebrate its German ancestry and heritage through an Oktoberfest celebration held within the parks. These unique features have allowed Bremen to strive to be a destination place while offering high quality annual programming for residents.

Bremen Parks are built for tomorrow. Tomorrow's residents of Bremen are as much owners of the current parks system as current and past residents of the town. The parks are maintained, celebrations are conceived, and this plan is written with those future generations in mind. It is the desire of this plan to continue on the momentum of the past to improve and plan for the future. That process begins today with this planning effort.

PURPOSE

Bremen established a Parks Board to serve the residents of Bremen in providing high-quality parks and recreation facilities, programs, and services. This master plan is one of many five-year park master plans completed over the years with the purpose to continue to enhance the facilities, programs, and services while looking for opportunities for future growth. As a continuously improving group of volunteers, the Bremen Parks Board recognized the need to update their parks master plan to guide their continuing efforts. The Bremen Parks Board reached out to the Michiana Area Council of Governments (MACOG) to guide and facilitate the planning process.

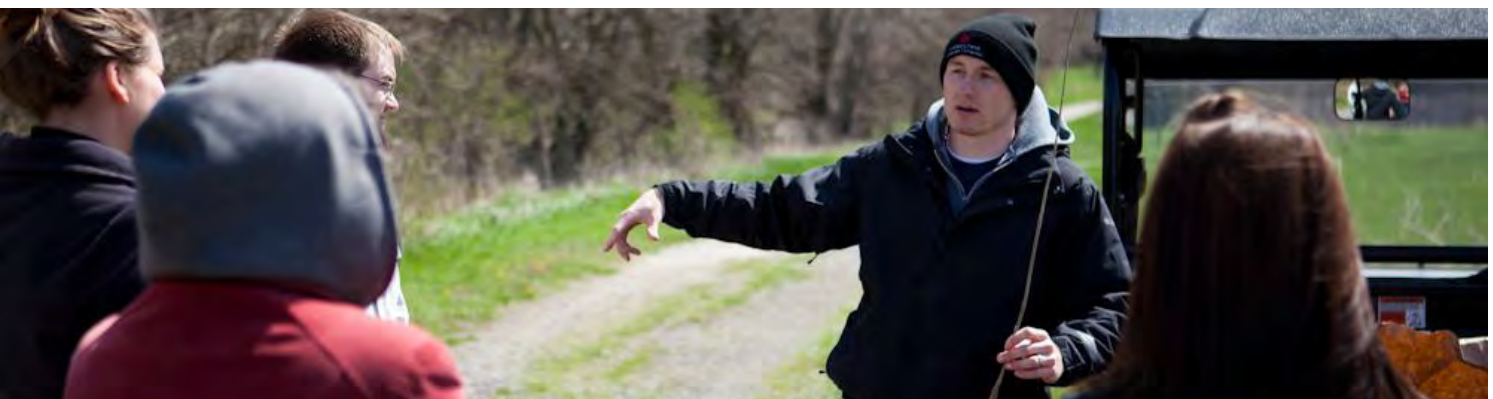
This Plan seeks to update the mission of the Parks Board and the vision for a town parks system. The Parks Master Plan should be used to guide the Parks Board to plan and program for high-quality parks and recreational services. This plan analyzes the Town’s existing conditions that include socioeconomic data, natural and cultural features, historical assets, and man-made features that affect the usage and need for parks in Bremen. Public engagement was a vital component to identify the needs and creation of the action program. Chapter 5 outlines the community engagement efforts used for the development of this plan.

DEFINITION OF THE PLANNING AREA

The planning area reflects Bremen’s town limits and a three-mile radius including the residential area around the Lake of the Woods. It will also take into consideration connections via trail systems to nearby regional communities such as Wakarusa, Goshen, Nappanee, Plymouth, and Bourbon.

BREMEN PARKS & RECREATION DEPARTMENT

The Town of Bremen has a Parks and Recreation Department responsible for the operations and maintenance of Bremen’s parks and recreational facilities and providing programs for the community. The Parks and Recreation Department is managed by the Park Superintendent, Brian Main, and manages seasonal part-



time employees. Seasonal employees include three to four groundskeepers to help with mowing, four to six high school or college-aged students that help with summer maintenance projects, a pool manager and pool assistant manager that oversee the community pool, and eight to ten lifeguards. The Town Council annually evaluates the coming year's budget and has on average allocated approximately \$250,000 to the Parks and Recreation Department since 2011. The Parks and Recreation Department, unlike other rural communities, is fortunate to have several revenue sources to help fund the operations and maintenance of its parks and recreational facilities. These revenue sources include rentals of the pavilions, agreement with Bremen Schools for use of the Town's ball fields for athletic events, Welborn Farms, and property taxes. However, property tax caps over the last ten years have limited the Parks and Recreation Department's expenditure abilities; despite a growing park system with more amenities and resident expectations.

PARKS BOARD

The Town of Bremen has a five-member Parks Board that oversees and guides the direction of the Bremen Parks and Recreation Department, and the enhancement of Bremen's parks and recreational amenities to be accessible and enjoyed by all residents. Board members are appointed by the Bremen Town Council and serve for four years with a rotating membership each year. The Parks Board typically meets on the first Monday of every month at 6 PM in the Pines Building at Shumaker Westside Park.

PARKS BOARD MEMBERS

Brita Miller, President

Jeff Byrd, Vice-President

Dr. Blaine Maxson, Secretary

Tim Orcut, Member

Greg Miller, Member

The Parks Board's mission is based on C.O.R.E. - Create Opportunities for Recreational Enjoyment.

Its vision is to "Create opportunities for lifelong memories and recreational enjoyment that will strengthen and enhance our community."



MISSION

C.O.R.E

**Create
Opportunities for
Recreational
Enjoyment**

VISION

“Create opportunities for lifelong memories and recreational enjoyment that will strengthen and enhance our community.”

LOCAL & REGIONAL PLANNING EFFORTS

- **Bremen Downtown Redevelopment Master Plan** – The Bremen Downtown Redevelopment Master Plan is a local planning effort set to reclaim Bremen’s historic downtown as a vibrant and active place filled with opportunities to shop, dine, and enjoy life. This effort was in conjunction with another planning effort that the Indiana Department of Transportation (INDOT) had planned to capitalize on the reconstruction of SR 106 through downtown. Through this effort, Bremen was able to improve the downtown streetscape with a new identity by integrating traffic calming elements such as reduced travel lanes, street lighting, banners, street furniture, high-visible crosswalk markings, and reduced intersection crossings with raised landscape beds at the corners known as “bump-outs.” Other recommendations include expanding the local retail base and facade improvements.
- **Marshall County Parks Master Plan** – The Marshall County Parks 2021-2025 Master Plan was the first master plan for the newly established Marshall County Parks Board. As the first plan for the new organization, there is a clear emphasis on staffing needs, facility and program development, and community connection. Strategies included creating a county trail system and canoe trail on the Yellow River. This plan will inform Bremen’s planning efforts to create trail connections to a future trail system and establishing a canoe launch from one of the parks.

- Marshall County Crossroads Regional Development Plan**
 – The Marshall County Crossroads Regional Stellar Initiative began several years prior to OCRA’s Stellar Communities Program. Regional planning and collaboration were started by the Marshall County Economic Development Corporation (MCEDC) quarterly County Development for the Future meetings that brought together local elected officials, county leaders, community stakeholders, school corporations, and state and regional partners. The Marshall County Crossroads Regional Development Plan seeks to create high-quality hometowns that are healthy, livable, thriving, and sustainable and give all residents the highest quality of life. The County plans to accomplish this with projects that build quality places to live, work, and play; accessible multi-use trails; diverse and affordable housing options; quality education to prepare the workforce; burgeoning arts and cultural events to celebrate the uniqueness of the communities; and, expand the leadership, diversity, and inclusion capacities.
- Marshall County Quality of Life Plan** – The 2020 Marshall County Quality of Life Plan outlines the County’s vision and establishes goals for the six communities of Argos, Bourbon, Bremen, Culver, LaPaz, and Plymouth, and action strategies. This Plan was a result of the years of collaboration started by MCEDC, then through the 2018 and 2019 Regional Stellar Communities Program through the Indiana Office of Community and Rural Affairs (OCRA). The purpose of the plan was to create a unified vision – “Great Hometown: One Vision” – and define a set of goals and strategies to empower the six communities and the County to create quality spaces, quality economies, and quality capacities (education, diversity and inclusion, and leadership). Following the success of the 2019 Regional Stellar Communities designation, Marshall County emphasized the need to create a Quality of Life Plan to sustain the momentum of the short-range planning efforts with a longer-term vision and a framework to implement the Stellar Communities Regional Development Plan.
- Marshall County Trails Master Plan** – The Marshall County Trails Master Plan was the result of the Regional Stellar initiative of the Transportation and Trails Committee, a subcommittee of the Marshall County Crossroads stellar team. This plan intends to provide safe and accessible routes for all non-vehicular users regardless of socioeconomic status throughout Marshall County and the region. Goals and strategies from this Plan provide a framework for the County to plan and design trail systems that improve the following aspects: the experience and safety of users; improve the community’s health and quality of life with a provision of trails; benefit local businesses by encouraging trail users to “shop local” – eat and shop in Marshall County’s communities; increase property values near trails; improve the overall attractiveness of the County; reduce commuter costs and fuel consumption; preserve

the natural landscapes and air quality; and lastly, connect Marshall County communities to showcase the region's unique assets, features, and landmarks.

- **MACOG Active Transportation Plan** – MACOG prepared a regional active transportation plan in 2016 that identified community needs and strategies to improve the walking and bicycling experience in Elkhart, Kosciusko, Marshall, and St. Joseph Counties. This plan serves as part of the Michiana on the Move: 2045 Transportation Plan and builds on the support of its local municipalities.
- **Bremen Comprehensive Plan 6000** – The Town of Bremen has an adopted comprehensive plan from 2015 that serves as the Town's road map to guide investments and development decisions for the next 10 to 20 years. This plan provides a vision and action program unique to the community and empowers the local community to collaborate and strategically think through creative ways to address community challenges, enhance the strengths and opportunities related to housing, water and sewer systems, transportation, downtown, community facilities, and quality of life amenities like parks, trails, and entertainment. This plan informs the update park master plan with guidance on creating a town trail system to its major destinations and parks.



2



Existing Conditions

The Town of Bremen sits at the heart of northern Indiana and the geographic beauty found in the region. Sitting in the northeast corner of Marshall County, Bremen is within 20 minutes of three other counties (St. Joseph, Kosciusko, and Elkhart) along with large metropolitan areas like South Bend/Mishawaka and Elkhart/Goshen. It is a prime central place of recreation and leisure in north-central Indiana. Among the surrounding three counties, Marshall County, Bremen's home, is the most rural and least populated. Bremen is served by three major intersecting transportation routes, U.S. 6 and State Road 106 running east and west and State Road 331 running north and south.

NATURAL FEATURES AND LANDSCAPE

Soils – The Town of Bremen comprises 1,412 acres of land or 2.2 square miles. Examining Bremen's soil composition, according to the USDA Soil Survey of Marshall County, a majority of the soil classifications in Bremen is the Riddles-Oshemo-Metea (40.3 percent coverage), Rensselaer (11.9 percent coverage) with the next highest coverages being the Crumstown soils, Whitaker soils, and Psammaquents soils, each with an approximate six percent coverage. These soil types are rated as somewhat limited to very limited to support recreational uses such as playgrounds or multi-use trails due to their limiting natural soil properties of slow drainage or being too sandy to support structures. This means these soils would require severe amendments to be favorable for development. However, most of the soil classifications in Bremen are suitable for farmlands. The Town of Bremen and its parks sit in a glacial outwash plain along the Army Ditch and the Yellow River. Due to the glacial nature of the area, the topography is flat to gently rolling. Elevation of the county ranges from 705 feet to 895 feet above sea level.

Water Resources – Bremen has several key water resources that play a large role in parks and recreation potential. The Yellow River, a tributary of the Kankakee River, is the main river flowing to the north and west of the town. The Middle Fork of the Yellow River flows through Bremen from the southeast corner in a northwest direction to meet the main fork to the northwest of the town. The town and the surrounding countryside are in the Kankakee River Basin via the Yellow River. The Kankakee eventually flows to the Illinois River and the Mississippi River further downstream.



Sunnyside Park is home to a man-made wetland and pond area that was constructed by the Town of Bremen’s Park Department. The wooded area around the wetlands is home to wildlife that includes white-tailed deer, cottontail rabbits, squirrels, raccoons, and numerous birds. The pond is stocked with panfish.

Climate – The climate of Bremen, like other communities in northern Indiana, can drastically change within a season. The wettest month is June with an average of 4.48 inches of rain. The average high temperature in the summer is 86 degrees Fahrenheit with July typically being the hottest month. The average low temperature in the winter is 16 degrees Fahrenheit with January being the coldest month. The first freeze typically occurs in the middle of October and the last freeze typically occurs at the beginning of May.

Invasive Species – Bremen Parks has several invasive plant species present including burning bush, wintercreeper, multiflora rose. The Town of Bremen is monitored by the Marshall County Soil and Water Conservation District.

MAN-MADE, HISTORICAL & CULTURAL FEATURES

Historical Background

Bremen was incorporated in 1871 by a group of German settlers who originally named the town “New Bremen.” Over time, the “New” was omitted for the town to be simply called Bremen. The first streets were paved in 1913 several still exist today!

For much of the town’s first century, Bremen was known as “Mint City.” Filled with rich black soil of the Indiana prairie, the agricultural leaders in Bremen created a niche as a producer of mint. This soon gained national acclamation recognized as an agricultural leader for its mint production, causing northern Indiana to be known as the mint capital of the nation. Although mint production has since moved west to Oregon and Washington, Bremen still retains its nickname as the “Mint City.” By the 1970s Marshall County had become a burgeoning rural center of agriculture and manufacturing. Bremen’s most recognizable citizen, Otis R. Bowen, served as the Secretary of Health and Human Services under President Ronald Reagan from 1985 to 1989 as well as Governor of Indiana, being elected in 1972.





Historic Sites

- Bremen has two historic districts; one being its central business district and the other a residential neighborhood. These designated districts highlight the history and special nature of the jurisdictions and help guide appropriate development in the area. The historic districts are listed on the National Register of Historic Places as the Bremen Commercial and Residential Historic District.
- Bremen has several historic sites listed on the National Register of Historic Places that include historic downtown buildings such as the former Bremen State Bank now the home for Bremen Town Hall, the Bremen Standpipe (the original town's water tower), the Dietrich-Bowen House, and the iconic Bremen Historic Train Depot. The historic train depot once operated as a Western Union and passenger and freight office until the 1970s that ultimately closed in 1987. The Bremen Historical Society sought to restore this structure in 2011 and moved it to its current location at the corner of US 6 and SR 106. It now functions as a museum reclaiming the events and stories of this longstanding asset. The Bremen Cemetery is another historic site that includes the Heister Military Memorial.



Community Facilities

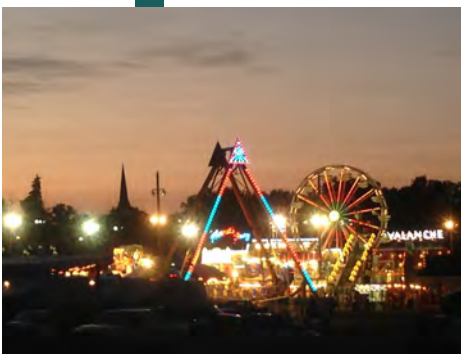
Libraries – Bremen has a public library. The library serves residents living in specific service jurisdictions. Libraries are often the main sources for public meeting spaces and access to free information for residents in the community.

Museums – With a rich history to exhibit, Bremen has two prominent museums to educate residents and visitors on the past ages of Bremen's life. These museums include:

- Bremen History Center
- Bremen Historic Train Depot

Festivals and Events

Bremen has many annual popular community festivals and events that occur throughout the year, providing many opportunities for locals to connect with their families and friends to relish past memories and celebrate new ones. These popular events include the Fireman's Festival that occurs in June; the 4th of July Fireworks hosted in Sunnyside Park next to Jane's Park Playground; Oktoberfest; a Holy Walk in December celebrating the Nativity of our Lord and Savior; and, the Farmer's Market that occurs from spring to fall every Wednesday evening.



SOCIOECONOMIC FACTORS

Population

Determining a community’s population trend can present the Bremen Parks Board with a direction of necessary services and real estate demand based on a growing or declining population.



In addition to the Decennial Census and American Community Survey (ACS) 5-year estimates, the U.S. Census provides annual population estimates through their Population Estimates Program (PEP) that better reflects past trends and leads to a more accurate estimate than the ACS 5-year population estimate. Therefore, the PEP estimate was only used to provide a better snapshot of Bremen’s trend in population, and the 2019 ACS 5-year estimate was used for all other analyses in the existing condition elements.

According to the 2019 ACS estimate, Bremen was home to 4,505 residents. Between 1990 and 2000, Bremen had just above a five percent decrease in population. Between 2000 and 2010, Bremen experienced a 2.3 percent growth in the total population of the town. Between 2010 and 2019, Bremen’s population decreased slightly by 1.8 percent. This is similar to Marshall County’s population decrease of 1.8 percent in the same period of 2010 to 2019.

Table A.1: Population Trend

| Community | Decennial Census | | | Annual Estimates | | | | | | | | |
|-----------------|------------------|--------|--------|------------------|--------|--------|--------|--------|--------|--------|--------|--------|
| | 1990 | 2000 | 2010 | 2011 | 2012 | 2013 | 2014 | 2015 | 2016 | 2017 | 2018 | 2019 |
| Marshall County | 42,182 | 45,128 | 47,051 | 47,016 | 47,045 | 47,057 | 47,032 | 46,962 | 46,833 | 46,752 | 46,595 | 46,461 |
| Bremen (town) | 4,725 | 4,486 | 4,588 | 4,589 | 4,591 | 4,603 | 4,581 | 4,588 | 4,577 | 4,548 | 4,519 | 4,505 |

Population Projection – Analyzing the county’s population trend over the last 9 years, as shown in Table A.1, shows a slow decline at a rate of about 9 people annually. If the town continues at this rate of decline, by 2025 the population will decrease by 54 people (4,451 total population), and by 2030 the population will decrease by 99 people (4,406 total population). A turnaround in the projected population trend is possible for Marshall County as a whole, but the expected population growth will most likely occur within Plymouth instead of the small incorporated areas.

The town’s proximity to the growing South Bend-Mishawaka metropolitan area among other community assets and strengths could contribute to future population growth. The town of Bremen has the potential to grow as bedroom communities to the larger communities in St. Joseph County for residents who want to live in a charming small town yet close to large municipalities. The projected decline provides an important opportunity for Bremen to plan for whatever the future holds and ensure it can attract future residents through high-quality parks and recreation systems and facilities.

Age and Sex – The success of parks can be based on several factors including the amount of users attracted each year, the quality of places,

and how inclusive park facilities are. Bremen must continue planning efforts by considering the age and sex of residents. The median age in Bremen has increased from 2000 (35.0 years) to 2019 (36.5 years) by 4.3 percent. Like the town, Marshall County has seen an increased median age in the first two decades of this century from 35.5 years in 2000 to 40.0 years in 2019, a 12.7 percent increase.

The trends seen in the U.S. Census data show that Bremen's population is aging, which could be a sign of its tight-knit community - people want to stay in the area as they age. Unfortunately, it could also signal that younger residents are moving away after high school and choosing to settle elsewhere. Looking at different age cohorts, the most significant increase was a 116 percent increase in 60 to 64-year-olds from 2000 to 2019. The 55 to 59-year-olds age group increased by 6.7 percent and the 65 to 74 years-olds age groups increased by around 33.9 percent in the same period. All age groups between 10 and 24-year-olds all decreased in the same period. An aim of the Bremen Parks Board could be how to attract a younger generation back to the county through parks and recreation opportunities.

Race & Ethnicity – Bremen has been classified as predominantly White (89.7 percent in 2019) over the last two decades. The two other largest racial categories in the town are Some Other Race at 5.7 percent and Two or More Races at 4.6 percent.

The Hispanic population in Bremen represents approximately 25.1 percent of the community residents and experienced a 110 percent increase between 2000 and 2019. This means that in 2019 approximately 1 in 4 Bremen residents identified as Hispanic.

Disability – Bremen has 15 percent of its population classified as disabled and of those disabled, 6.5 percent are 65 years or older.

Poverty – Bremen's poverty rate (based on the population for whom poverty status is determined) increased substantially from 6.5 percent in 2000 to 14 percent in 2019. That is a 115 percent increase in the poverty rate in just two decades.

Looking at the poverty rate by race shows that whites in Bremen have nearly the same rate as the town as a whole (15.3 percent). There is a drastic difference in that 20.1 percent of Hispanics are living in poverty. This inequity at the town level presents a challenge for the Bremen Parks Board to ensure equal access to public parks and recreational facilities for all residents.

Educational Attainment – The Educational Attainment Rate in a community can help Bremen identify the need for workforce development programs and guide industry opportunities. Additionally, the educational attainment rate can give an idea of the characteristics of the county's workforce and should be examined with the types of industries and jobs the county is trying to attract and retain.

From 2000 to 2019, the percent of residents in Bremen with less than a 9th-

grade education dropped a resounding 51 percent. In the same period, there was a 43 percent increase in those who hold a Bachelor's Degree within the town. This means that in 2019, 82.3 percent of Bremen residents held a high school diploma or higher and 19.8 percent held a bachelor's degree or higher. These numbers are lower than both the national and state averages.

Housing

As Bremen experiences changes in demographics and growth, in both population and jobs, ensuring Bremen has an adequate supply of housing for all types of residents will be crucial in maintaining its quality of life. Bremen will have to consider where new housing should be located while maintaining a proper balance with current development, and how to preserve and maintain the existing housing stock. Housing is linked to other elements like population (identifying changes in households and establishing their needs), land use (evaluate its fiscal impacts to develop on undeveloped lands or infill on underutilized lands), and community facilities (does the neighborhood have access to appropriate utility systems and assets).

Housing Types – According to the 2019 ACS 5-year estimates, the majority of housing units (64 percent) are single-family detached. Less than five (5) percent of housing is single-family attached, the majority of these homes likely reflecting condominiums. 26.1 percent of Bremen's housing stock is multi-family with between 2 to 9 units. The town's housing is also approximately 5.7 percent multi-family with 10 units or more and with no significant percentage of mobile homes or other types of housing reported.

Occupancy Rates & Tenure – The percentage of occupied housing units in Bremen increased from 94.3 percent in 2000 to 96.6 percent in 2019. The vacancy rate in Bremen decreased 40 percent from 2000 (5.7 percent) to 2019 (3.4 percent).

The percentage of owner-occupied housing units decreased significantly from 71.9 percent in 2000 to 53.6 percent in 2019. Alternatively, the percentage of renter-occupied housing increased from 28.1 percent in 2000 to 46.4 percent in 2019.

Average Household Size & Households by Type – The average household size in Bremen has declined only slightly since 2000. The town's average household size was 2.59 in 2000 and declined to 2.30 in 2019. This is lower than the national average (2.6) as well as the state average (2.52). According to the 2019 ACS 5-year estimates, approximately 65.3 percent of occupied housing units are occupied by one (1) or two (2) people (37.1 percent 1-person and 28.2 percent 2-person). The number of non-family households grew from 30.3 percent in 2000 to 37.7 percent in 2019. The percentage of families with children decreased from 34.5 percent in 2000 to 31.8 percent in 2019.

Household Income – Household Income is an indicator of economic health in an area or population. It is the total income of all persons living in a household over the age of 15. Bremen had 55.2 percent of households making less than \$50,000 in 2019, but this has decreased from 60.9 percent in 2000. The largest household income cohort growth was in the \$100,000 - \$199,999 income range that grew from 3 percent in 2000 to 18.4 percent in 2019. The middle-income cohort (\$50,000 - \$99,999) saw a declining trend with 32.6 percent in 2000 and 26.3 percent in 2019. This may indicate growing income inequality throughout the town mirroring a national trend.

Median Household Income is a factor that helps in determining an area's quality of life and shows the stability of a real estate market. Bremen's median household income decreased by 8 percent from 2000 (\$40,185) to 2019 (\$37,111). This trend is certainly unwelcome, but even more so in the context of national trends. Bremen's median income was 96 percent of the federal median income in 2000 but was only 59 percent of that same metric in 2019. This indicates the uneven distribution of economic growth in the country and is something for the Bremen Parks Board to consider when planning and providing services.

Housing Costs – The cost of housing in Bremen is rising. The median home value for owner-occupied housing units in Marshall County was an estimated \$134,100, up 29.4 percent since 2010. This outpaces the cost of housing increase in Marshall County as a whole which was only 12.4 percent in the same period. This would indicate that a large quantity of the housing market's growth in the county has occurred in or around Bremen. The median home value in Bremen is lower than both Indiana's (\$141,700) and the nation's (\$217,500).

Housing Affordability – In order to determine housing affordability in Marshall County, we need to consider the percentage breakdown of household income. If costs exceed 30 percent of income, households are considered housing cost-burdened. In 2019, approximately 10 percent of households in Bremen were considered housing cost-burdened. This could be considered a barrier to the town with a lack of affordable housing options such as starter homes.

Employment Trends

Major Industries – The major industries data can only be collected at the county level, thus the following numbers reflect Marshall County as a whole. However, it serves as a guiding baseline for this plan. According to the US Census Bureau, the top three industry sectors over the last ten years have consistently been manufacturing, retail trade, and healthcare and social assistance. In 2019, 27.9 percent of total jobs in the county were in manufacturing with 10.4 percent in retail trade and 8.1 percent in health care and social services. These major industries are also the three largest industries within the state of Indiana as a whole. The county's arts, entertainment, and recreation sector only account for 1.4 percent of the county's employment.

Largest Employers

- **Southwire Co. (Bremen)**
- **Nishikawa Copper LLC (Bremen)**
- **Walmart Supercenter (Plymouth)**
- **Aker Plastics (Plymouth)**
- **Ancilla Domini Sisters Inc. (Plymouth)**
- **Universal Bearings (Bremen)**
- **Valmont Site Pro 1 (Plymouth)**
- **Swan Lake Resort Golf Shop (Plymouth)**
- **St. Joseph Health System (Plymouth)**
- **Bremen Castings (Bremen)**

Labor Force and Unemployment – Labor force refers to the number of persons actively employed and those unemployed who are looking for employment. Within Bremen in 2019, approximately 2,115 residents make up the labor force. The annual unemployment rate held at 2.5 percent, slightly below the state’s average.

Net Assessed Value – Examining Bremen’s net assessed value can indicate the construction activity in the county, which correlates to the county’s budget for capital expenditures and demand for residential, commercial, and industrial uses. The county’s assessed value has increased by 14.10 percent from \$172 million in 2014 to \$196 million in 2019. Marshall County saw a 4.61 percent increase in assessed value going from \$2.43 billion to \$2.54 billion in the same period.

Per Capita Income – Bremen’s per capita income level can measure the access to high-quality living-wage jobs for resident’s ability to have a higher disposable income after paying bills. This also gauges the health of the local economy to support local businesses and enjoy parks and recreation activities. Bremen’s per capita income is \$24,037, 77.5 percent of the state’s per capita income.

Jobs to Household Ratio – The jobs to household ratio gauges the distribution of employment opportunities and workforce (those actively employed) population across a geographic area. A ratio of 1.0 to 1.5 indicates a community has approximately an equal balance of jobs and housing. A ratio of less than 1.0 indicates a community has more housing than jobs; whereas, a ratio greater than 1.5 indicates a community has more jobs than housing. These numbers are only collected at the county level and reflect all of Marshall County. Based on the numbers provided by the U.S. Census Bureau, Marshall County has a Jobs to Household Ratio of 1.2.

3



Parks & Recreation Facilities

The Town of Bremen features three parks, Jane’s Park Playground at Sunnyside, a community pool, a sledding hill, a skate park, tennis and pickleball courts, basketball courts, and youth baseball, football, and soccer fields.

- **Sunnyside Park** – Sunnyside Park is Bremen’s largest community park, totaling 100 acres, located at 512 S. East Street. Sunnyside Park dates back to 1910 and gained its roots as being the location for a local baseball team and now serves as the home for several Bremen High School sports teams. Several of Bremen’s popular seasonal festivals are located at this park such as the Bremen Firemen’s Festival and the 4th of July Fireworks. Sunnyside Park is home to the Bremen community pool, a wetland conservation area, a dog park, baseball and softball fields, soccer fields, several basketball courts, multi-purpose tennis and pickleball courts, a skate park, walking trails, public restrooms, several rentable pavilions for group events, and two playgrounds including the popular Jane’s Park Playground.



- **Jane's Park Playground** – One of the two playgrounds at Sunnyside Park is Jane's Park Playground. Jane's Park Playground features a multi-level wooden playground, built in 2000 as a memorial to Dr. Jane Sieg-Stillson. The playground is meant to be for all children and was built entirely through volunteers and donations.
- **Shadyside Park** – Shadyside Park is located off Center Street and occupies approximately 3.25 acres on the side of the Middle Fork Yellow River. The park was established in 1909 and was mostly swampland. Today the park offers two sledding hills as well as a playground, basketball court, an enclosed rental facility, and public restrooms.
- **Shumaker Westside Park** – Located on approximately 11.5 acres at the corner of Plymouth Street and Industrial Drive, this park was originally established as a neighborhood park for the Shumaker neighborhood in the 1970s through collaboration with local Bremen residents. It is the hosting site for the Bremen Holy Walk, monthly Parks Board meetings, and other smaller events at the Pines Building located off SR 106. The park has open grassy areas which make it a great destination for quiet walks and family gatherings. This park will soon be the location for the new planned canoe/kayak launch on the Yellow River. This launch will help achieve a strategy identified in the Marshall County Parks Master Plan to increase recreational access to the Yellow River.



BREMEN PARKS FACILITIES MAP

**Shumaker
Westside Park**





**Shadyside
Park**

**Sunnyside
Park**

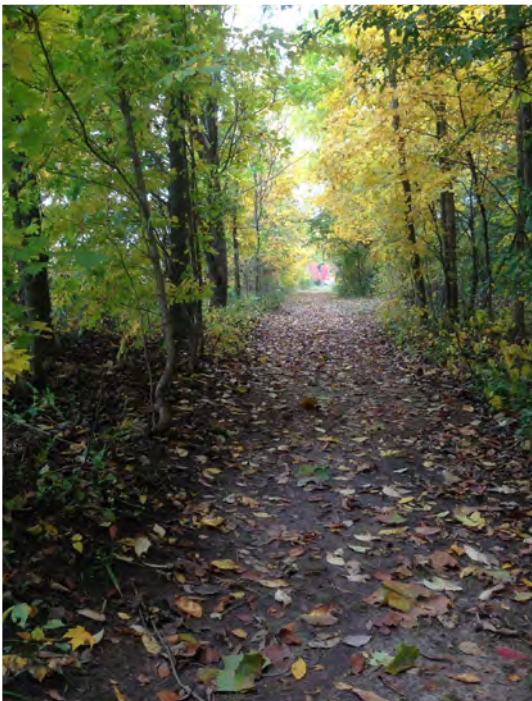
**Jane's Park
Playground**

BREMEN PROPOSED TRAIL NETWORK

During the Stellar Community Designation process, Marshall County created a Trails Master Plan to help guide the county in the planning and implementation of a county-wide trail system. This system would link Marshall County's communities together as well as offer links to regional trail systems like the Nickel Plate Trail in Rochester or the Pumpkinvine Nature Trail in Goshen. During this planning process, the Bremen community proposed a trail network loop connecting its parks and destination places. This local trail network would include the following proposed connections.

- Connect Sunnyside Park to Shumaker Westside Park using Grant Street and Stewart Street, and if a trail is not feasible then consideration could be made to dedicate sidewalks and bike lanes in-lieu of a trail, and then an off-road trail south of the neighborhoods up to Shumaker Westside Park.
- Connect Shumaker Westside Park to Shadyside Park alongside northern railroad tracks and the Yellow River down to Shumaker Westside Park.
- Connect Shadyside Park to Sunnyside Park alongside the Yellow River and northern railroad tracks and down SR 106 Sunnyside Park.
- Connect to Downtown from Shadyside Park using a portion of Center Street, Mill Street, and Jackson Street.

Supporting this proposed trail network are the town's existing trails within its parks. Bremen has approximately 2.5 miles of trails within Sunnyside Park and 0.16 miles in Shumaker Westside Park, with an additional half-mile nature trail in the wetlands adjacent to Sunnyside Park.



Bremen also features an existing sidewalk and on-road bike network connecting neighborhoods to downtown and their parks. These existing networks would aid the Town in transitioning some of the existing sidewalks into multi-use trails if having a dedicated off-road path is unfeasible to create the proposed trail loop network connecting their parks.

OTHER RECREATIONAL AMENITIES

County Park Facilities

Mill Pond – Located on 30 acres off Rose Road, this county-owned property is an undeveloped woodland that is in the process of being the future home to the County’s first mountain biking course. Volunteers from a local mountain bike group are currently developing the course that will feature basic to intermediate trails.

Memorial Forest – Located on 80 acres at the conjunction of SR 17 and 14th Road, this county-owned property is an undeveloped woodland to honor World War I veterans. The Parks Board would like to explore opportunities during the planning process for recreational uses.

The Marshall County Barn Quilt Trail – This is a self-guided tour around the barn quilts of Marshall County. There are four loops of the trail (Northwest, Northeast, Southeast, and Southwest) that help residents and visitors celebrate the heritage of agriculture and the time-honored tradition of quilting.

Potawatomi Wildlife Park – Located in Tippecanoe, Indiana is a not-for-profit private foundation. Its mission is to be a place where the natural, historical, and cultural features of the area are conserved, protected, and restored for use and enjoyment by present and future generations.



4



ADA Compliance & Accessibility

OVERVIEW

According to the U.S Census 2019 ACS 5-Year Estimate, 15 percent of Bremen residents have some level of disability. The Census defines a person as having a disability if they have difficulty performing a specific task such as seeing, hearing, bathing, or doing light housework, or if they have a specific condition, such as Alzheimer's disease. Below is the percentage of Bremen residents by age group that reported having a disability.

- Under 18 Years: 1.1 percent
- 18 to 64 Years: 7.4 percent
- 65 years or Older: 6.5 percent

STATEMENT OF ACCESSIBILITY

The Town of Bremen strives to provide reasonable conditions and accommodations for all people with disabilities in all of the existing and future facilities, programs, activities, and services. This includes utilizing universal design and inclusion principles that provide access and inclusion for people with disabilities, either physical or mental.

The 1990 Americans with Disabilities Act (ADA) requires that local governments, including park boards, remove any barriers to access and inclusion in facilities, programs, activities, and services. Marshall County will provide these accessibility modifications that meet ADA guidelines for any significant alterations of an existing facility, program, activity, and service. Beyond physical alterations and improvements, inclusion and universal design will be utilized for the development of programs, services, activities, communication, signage, policies, and procedures.

The Town of Bremen has an ADA Transition Plan (2012) in place along with a town ADA Coordinator, Trend Weldy. Trend Weldy is also the Town's Director of Operations. Individuals should submit a complaint to Trend, contact information is below, notifying that a program, service, or activity in Bremen is not accessible to a person with disabilities.

Trend Weldy, Director of Operations:
574-546-2044 | director@townofbremen.org
111 South Center Street, Bremen, IN 46506

BREMEN PARKS ACCESSIBILITY REVIEW

During the preparation of this plan, MACOG conducted an accessibility review of Bremen's parks and recreation facilities. The Town of Bremen strives to provide barrier-free and inclusive parks and recreation facilities as much as possible. It is a Town goal to make every effort possible to remove and/or upgrade non-compliant amenities and structures to improve and expand Bremen's parks and recreation facilities.

The majority of Bremen's parks and playground equipment need to be improved to mitigate accessibility barriers and comply with the current ADA standards. It is a Town's goal to integrate improvements in the planning of future public facilities and infrastructure systems and ensure public capital projects meet ADA requirements. Other ADA improvements should also be prioritized and implemented as funding becomes available. A detailed review of the accessibility of Bremen's parks is provided below.

Shumaker Westside Park



The location of the Shumaker Westside Park has long served as a neighborhood park for the adjoining subdivision and is managed by the Town of Bremen Parks Department. This provides a great opportunity for neighborhood children to be within close proximity to a park without having to drive to one of the other two Bremen parks. This park features a playground structure, a community building, and a walking path. However, access to the playground structure, shown in the image, is not on an ADA accessible route by having natural surface walking paths, wood timbers bordering the playground area, and pea gravel, which is not an ADA compliant surface material. Public playground surfaces should meet the standards set by the American Society for Testing Materials (ASTM) related to resiliency for falls (ASTM F1292-99/04) and having firm and stable surfaces (ASTM F1951-99). The playground has no ground level play components given the number of elevated play components and should be upgraded to have at least one ground level play component on an accessible route. Access to "The Pines" building at Shumaker Westside Park provides handicap-accessible parking spaces and a ramp to the front entrance. The parking lot has a firm and stable surface material. Inside "The Pines" building is an ADA accessible public restroom and kitchen.



Shadyside Park



Shadyside Park is one of the Town's first public parks dating back to 1909. While the park has received several upgrades over the years there are still a number of components that should be addressed to be ADA accessible. The main parking lot is located up on a hill off of Center Street and has no handicap accessible parking spaces or firm and stable surfaced material. Access from the parking lot to the park is by the concrete steps or by using the adjacent alleyway. Within Shadyside Park is a walking path that meets the minimum width requirements to allow space for a walker and wheelchair user to pass side-by-side. The walking path connects to ADA compliant public restrooms, ADA compliant recreation building, and the playground. The surface material underneath the playground structure is pea gravel and bordering it are wood timbers, which do not meet ADA compliance. The playground should meet the standards set by ASTM related to resiliency for falls (ASTM F1292-99/04) and having firm and stable surfaces (ASTM F1951-99). The playground has no ground level play components given the number of elevated play components and should be upgraded to have at least one ground level play component on an accessible route.

Sunnyside Park

Sunnyside Park is Bremen's largest community park with ample opportunities for its residents to have something to do. Sunnyside Park features multiple sports fields that are on accessible routes as well as has accessible multi-use trails that meet the minimum width requirements to allow space for a walker and wheelchair user to pass side-by-side. The park does have ADA compliant public restrooms and drinking fountains. There are two playgrounds available for children to enjoy. The first is Jane's Park Playground, with its review provided on the next page, and the second is near the community pool. Unlike the other Town playgrounds', the two playgrounds at Sunnyside Park have ADA accessible ramps incorporated with the playground structures, providing access from the walkways, depicted in the supporting image. However, the surface material underneath the playground is pea gravel and is bordered by wood timbers, which do not meet ADA compliance. The playground should meet the standards set by ASTM related to resiliency for falls (ASTM F1292-99/04) and having firm and stable surfaces (ASTM F1951-99). The community pool has ADA compliant



walkways, handicap parking spaces, and an ADA-approved lift chair to assist those with mobility impairments to get in and out of the pool.

Jane's Park Playground

Jane's Park Playground is located within Sunnyside Park adjacent to the dog park and soccer fields. Jane's Park Playground provides a unique experience for children to build memories with their families and friends. It features a multi-level wood structure, swing sets, and a gazebo. The playground, as shown in the image, does provide ADA accessible ramps for those with mobility impairments to access the playground but given the number of elevated play components, there are no ground level play components on the platforms within the structure or has limited inaccessible play components around the playground. The Town should upgrade the playground to have at least two ground level play components on an accessible route. Similar to the playgrounds at the other Town parks', the surface material underneath the playground is mulch and is bordered by wood timbers, which do not meet ADA compliance. The parking lot does have handicap parking spaces but the parking lot does not have a firm and stable surface material.



5



Public Participation

COMMUNITY ENGAGEMENT

Community Engagement throughout the process is key to understanding the needs and aspirations of Bremen's residents. Additionally, the success of any community-based plan is when the process is led by invested local stakeholders of the community and when all residents are actively engaged. This builds trust, accountability, a sense of community pride, builds ownership, and establishes a lasting relationship between the Town and its community residents.

MACOG began the process by coordinating with the Bremen Park Superintendent, the Town's project coordinator to determine and agree upon a scope of work, and organized the steering committee. This committee had a broad representation of the community, consisting of town leaders, department heads, Parks Board members, Bremen High School students, and general residents. During the project kickoff meeting, MACOG worked with the Steering Committee to outline a community engagement strategy. Engagement included two public input surveys, conducting stakeholder interviews, connecting with residents and visitors at the Bremen Fireman's Festival, posting promotional materials at public facilities and downtown businesses, and using Bremen Parks and Recreation Department's Facebook page.

These engagement activities allowed residents and stakeholders to share their BIG IDEAS for Bremen's parks and recreation system and what they would like to see improved guided the Steering Committee to create a unified vision and priority action strategies.



STEERING COMMITTEE MEETINGS

MACOG facilitated monthly Steering Committee meetings to guide through a five-step planning process, detailed below, and report on the progress of the Plan development.

1. **Establish a mission and vision for the Bremen Parks Board;**
2. **Establish a baseline understanding of Bremen’s current capacities and deficiencies the Town needs to improve;**
3. **Turn those needs into actions with priorities to guide future investments of the Parks Board;**
4. **Assemble these elements into the park master plan; and,**
5. **Approve the plan by the Bremen Parks Board.**

PUBLIC INPUT SURVEY #1 SUMMARY OF THE RESULTS

The first public input survey was available at the forefront of the planning process from June 14th to July 15th, 2021. There were 271 online surveys completed, representing approximately 6 percent of Bremen residents. This is similar to other planning surveys in the region and above the general threshold of 5 percent for input surveys. Utilizing the Fireman’s Festival as well as social media efforts such as Facebook, the survey had a wide range of responses from a diverse range of the town’s residents.

This survey allowed the community to share what they desired as BIG IDEAS for Bremen’s parks and recreation system, their favorite park features and rating, identify new amenities they would like to see developed, and their top three priorities the Town should prioritize for future implementation.



Below are the highlights of the public’s response to the first survey. A full summary of the survey results can be found in the Appendix.

39%
visit 3x per week
20%
visit at least 1x
per week

88% visit
Sunnyside Park

- 39 percent of respondents said they visit the parks at least three times a week and another 20 percent stated they visit the parks at least once a week.
- 59 percent of respondents rated Bremen’s overall parks as “Good.” 15 percent rated them “Excellent,” 20 percent responded “Fair,” 4 percent responded “Poor,” and only 1 percent said “Very Poor.”
- When asked which parks specifically within the Bremen parks system do they visit, an overwhelming majority of respondents (88 percent) said Sunnyside Park. Shadyside was selected by 18 percent of respondents and Shumaker Westside Park received 11 percent of respondents’ attendance.
- When asked to rate the parks individually, the only notable statistic is that more respondents said Shadyside Park “Needs Improvement” than was “Satisfactory.” This is the only park with that occurrence. See Appendix for the full report on the other individual parks.

67% want to see more community events and festivals

54% want more nature walks and hiking

40% want more sports training, and exercise or fitness classes

- Respondents were asked to **select all of the following they would like to see offered or increased in Bremen parks** and responded in the following manner (listed from highest to lowest):

- Community events and festivals (67 percent)
- Nature walks or hiking (54 percent)
- Sports training and tournaments (40 percent)
- Exercise or fitness classes (39 percent)
- Arts, crafts, and wood-working classes (36 percent)
- Plant, wildlife, and insect identification classes (36 percent)
- Volunteer activities (18 percent)
- Bicycle and pedestrian safety classes (13 percent)

- Respondents were asked to **select their top three priorities from the following list** and responded in the following manner (listed from highest to lowest)

- Maintain and enhance our existing parks and recreation facilities (59 percent)
- Develop more active recreation (sports, kayaking, swimming, playgrounds, etc) (55 percent)
- Develop a town trail network that connects our parks and recreation facilities (37 percent)
- Develop more indoor recreation facilities (recreation center, active field complex, etc.) (35 percent)
- Develop more passive recreation (nature walk, wildlife observation, picnicking, etc) (26 percent)
- Enhance the safety and security of our parks and recreation facilities (21 percent)
- Provide opportunities specifically for adult and/or senior citizen engagement in the parks (19 percent)
- Acquire land to develop new parks and recreation facilities (15 percent)
- Offer community classes (arts, fitness, education, etc.) (14 percent)
- Develop environmental or cultural arts programs (3 percent)

TOP 3 PRIORITIES

Enhance existing parks

Develop more active recreation

Develop a town trail network

PUBLIC INPUT SURVEY #2 SUMMARY OF THE RESULTS

A second public input survey was available through January 2022 that provided another opportunity for the Bremen community to share their BIG IDEAS of Bremen’s park and recreation system. This survey asked the community to prioritize the short-term priorities they would like to see the Town implement in the next five years. The survey was available to fill out online, and paper surveys were available at Town Hall. Notifications of the survey were posted at downtown businesses, Town Hall, the Bremen Parks and Recreation Department’s webpage, and Facebook page. We received input from 126 residents who responded online, representing approximately three (3) percent of Bremen’s population. No paper surveys were returned to Town Hall. Below are the highlights of the public’s response to the survey. A complete summary of the survey results is in the Appendix.



Top Priorities

The first survey question asked residents to prioritize their top three (3) strategies they would like to see implemented in Bremen in the next five (5) years. These strategies address the major needs and goals of the community identified from the first public input survey and the series of Steering Committee meetings. These strategies were then first prioritized by the Steering Committee before the release of the second survey to serve as a comparison. Results of this survey were shared and finalized by the Steering Committee and serve as the priority action program further discussed on page 35.

- Respondents were asked to **select their top three (3) strategies they would like to see implemented in Bremen in the next five (5) years** and responded in the following manner (listed from highest to lowest):
 - Continue to share resources and facilities with Bremen Schools (**60 percent**)
 - Create a landing page and community calendar on the Town’s website to advertise park information (**56 percent**)
 - Encourage local civic groups to host additional community events to maximize the use of Bremen parks and recreation facilities (**39 percent**)
 - Add a new staff member to Bremen’s Parks and Recreation Department to coordinate events and programs (**33 percent**)
 - Add dedicated bike lanes on appropriate local streets linking Bremen’s parks (**30 percent**)
 - Establish a Friends of the Park group (**26 percent**)
 - Review ADA compliance with Bremen’s parks and recreation facilities and create an action plan (**20 percent**)
 - Improve all park signage (**18 percent**)

60% continue partnering with Bremen Schools to share resources and facilities

56% streamline notifications of parks events and programs

39% expand community events to be offered by local civic groups

STAKEHOLDER INTERVIEWS

Following the vision-building process, MACOG conducted one-on-one interviews with the Parks Board and the Bremen Park Superintendent to dive deeper in identifying where Bremen’s parks and recreation system is currently at, areas the Town is doing well, and areas the Town needs to improve. Stakeholders were interviewed by phone in July 2021.

PRIOR COMMUNITY ENGAGEMENT ACTIVITIES

Over the last four years, Marshall County and its communities have collaborated together to go through multiple regional planning efforts. These initiatives included the Marshall County Crossroads Regional Stellar Communities Grant Program, the Marshall County Quality of Life Plan, and the Marshall County Trails Master Plan and involved multiple forms of community engagement. This included multiple input surveys, participating at community’s festivals and events, and hosting popup events. The results of these efforts were shared with the Bremen Steering Committee to inform them that what the community said during those initiatives remain reflective and true in the updating of Bremen’s Parks Master Plan. Over 1,100 residents responded to the input surveys offered during these regional planning initiatives. A summary of the survey results are provided below.

- 2018: Marshall County Crossroads Team surveyed the public to ready the county to apply for a Stellar Community designation. Over 700 people responded and can be informative for years to come.

SURVEY RESULTS:

- Residents were asked to select all that applied to why they live in Marshall County. The top three answers were:
 - I feel safe.
 - It’s a great place to raise a family
 - I like rural living
 - Residents were asked what three of the following areas should the investments focus on. The following were in the top 8 choices:
 - Trails and sidewalks
 - Parks and recreation
 - When participants were asked to rank their priority of the following goal statements, they ranked “Enhance Parks and Recreation Areas” as their #1 priority.
- July 2019: Marshall County Crossroads Trails Committee engaged members of the public on specific items related to trails, bike and pedestrian safety, and other active transportation issues.

SURVEY RESULTS:

- When surveyed, participants were asked to rank a list of goal statements. The following parks and recreation aspects were ranked as follows:
 - Multi-use trails within each community
 - Sidewalk improvements and sidewalk installations in the communities
 - Regional trails and connections
- A Marshall County Youth Focus Group offered the following ideas for trails in Marshall County:
 - Connect the communities via a regional trail system
 - Integrate arts (visual, performance, music, etc.), culture, and history into the trails.
 - Develop a public transit system that connects people to key locations in the communities: schools, hospitals, food, and other critical resources.
 - Follow Complete Streets guidelines when developing roads and trails
 - Work with the County and local departments to incorporate more bike signage and paths for pedestrian and bike trails when paving or improving roads.
- When asked the question of what they would like to see come from this trails master planning project, residents of Marshall County responded accordingly:
 - 28 percent: Explore the Outdoors
 - 14 percent: Biking & Variety of Recreational Options
 - 23 percent: Health and Wellness
 - 19 percent: Safety
 - 16 percent: In general, like the idea

PUBLIC COMMENT ON THE DRAFT PLAN

Bremen residents had another opportunity to provide their input on the draft 2022-2026 Bremen Parks Master Plan during February 2022. A public comment period was issued from February 7, 2022, to February 22, 2022, to allow residents the opportunity to review the narrative and comment on the draft priorities to guide investments improving Bremen's parks and recreation system for the next five years. The Steering Committee and Bremen Parks and Recreation Department notified residents of this engagement opportunity by advertising on Bremen's Parks and Recreation Facebook page, the Town's website, and by press release in the Pilot News and local media in Bremen. Residents could submit their comments on Bremen's Parks and Recreation Facebook page, using the online comment form, or the paper comment form provided at Town Hall. We received six comments: two were submitted through the online comment form and four were on the Bremen Parks and Recreation Facebook page. A summary of the submitted comments is located in the Appendix.

6



Needs & Gap Analysis

MACOG and the Steering Committee used several quantitative and qualitative methods to identify the Town’s major challenges to provide adequate parks and recreational amenities to its residents. Quantitative methods included results from the public input surveys, analysis of Census demographic and socioeconomic data, and evaluating the National Recreation and Park Association (NRPA) Acreage and Parks Level of Service (LOS) Metrics. Qualitative methods included exercises from the Steering Committee meetings such as a “Wow, Now, How” exercise, a thematic mapping brainstorm exercise, stakeholder interviews, summaries of the open-ended questions from the surveys, and a spatial gap analysis of parks and recreational amenities in Bremen.

ACREAGE & PARKS LEVEL OF SERVICE METRICS

The Steering Committee used NRPA’s Acreage and Park LOS Metrics to determine if the Town provides adequate acreage of outdoor recreation use and the amount of parks available per the current and projected populations. NRPA Acreage and Park Metrics measures total acreage of recreational lands per 1,000 residents and the total number of parks per 2,281 residents. These metrics are regarded as the most utilized standard given the ease of measurement and can be used by the Town as a vitality indicator to help measure resident’s quality of life in terms of parks and recreation enjoyment. These metrics can also be useful for the Bremen Parks Board and the Town of Bremen Parks Department to have a general sense of what comparable sized communities operate and maintain for their park and recreation systems.

According to the 2020 NRPA Agency Performance Review, a typical (an established) park and recreation board or agency have approximately 10 acres of land for outdoor recreation use per 1,000 residents in the

service area and one park for every 2,281 residents served. Bremen's population in 2020 was 4,696 residents (2020 US Census). Analyzing the trend in population between 2010 and 2020, it is projected that the Town's population could grow to approximately 4,804 residents by 2030.

Using 2019 aerial photography and Marshall County parcel records, the Town's three parks totals approximately 112 acres of land for recreational use.

There is an additional 843 acres of recreational lands provided in the service area that includes:

- 705-acre Lake of the Woods
- 138-acre Golf Course

Using the NRPA Acreage and Park LOS standards, the Town needs approximately 47 acres of land for outdoor recreation use and two parks in the service area to adequately service Bremen residents. Factoring the projected Bremen population in 2030, the Town would need an additional acre (48 acres total) of land for recreation use and two parks in the service area. The Town of Bremen has adequate amount of acreage to serve its current and projected populations for outdoor recreational use with 112 acres of recreational land and four parks in the service area.

Additional metrics provided in the 2020 NRPA Agency Performance Review is the average park and recreation agency has an annual operating expenditure per capita of \$81.19, manages 11 miles of walking, hiking, and biking trails, a revenue-to-operating expenditure of 26 percent, and has eight full-time employees per 10,000 residents in the service area. In light of this analysis, it should be noted that NRPA states the diversity of communities and their park systems does not necessarily lend itself to compare different systems against each other.



GAP ANALYSIS

While it is vital to evaluate Bremen's LOS to help understand the deficiencies from a quantitative perspective, this is only one tool. The Steering Committee also used qualitative methods to do a gap analysis to identify Bremen's major challenges and needs for improvement for its parks and recreation system. The qualitative methods included a "Wow, Now, How" exercise, a thematic mapping brainstorm exercise (SWOT analysis), stakeholder interviews, and the public input surveys. A summary of the community engagement efforts is in the previous chapter with a detailed summary of the input survey results are provided in the Appendix.

To kick the planning process off, MACOG facilitated a "Wow, Now, How" exercise with the Steering Committee. The "How" component was reserved for later in the planning process during the formation of the priority action program. This exercise led the Committee to identify their aspirations for Bremen's park and recreation system, identify what the Town is doing well to support their aspirations, as well as the major barriers preventing their aspirations from being a reality. Similar questions were asked in the first public input survey to serve as a comparison of what the general community thinks and what those on the Steering Committee thought to identify the similarities and differences. MACOG summarized these results and shared them with the Steering Committee at the second Steering Committee meeting. From this, the Steering Committee then conducted a thematic mapping brainstorming exercise to identify the major challenges the Town needs address to achieve the community's aspirations identified from the "Wow, Now" exercise. The following are the major challenges that need to be addressed to achieve the community's aspirations for their park and recreation system.



MAJOR NEEDS

- Staying aware of the community's needs
- Explore the feasibility to repurpose underutilized athletic sports fields and programs to look for innovation (i.e. establish a joint-use partnership with the school of athletic sports fields, and improved logistics)
- Look for opportunities to include up and coming sports to have permanent facilities (i.e. permanent pickleball courts)
- Maintain and enhance the upkeep of park amenities (i.e. bathrooms, drinking fountains, landscaping, and equipment)
- Explore the feasibility to add another park staff and town fiscal support for park programs
- Establish wayfinding signs on existing trails and future trails connecting to the parks and other destination places in Bremen
- Promote the new canoe/kayak launch at Shumaker Westside Park
- Establish a trail network linking Bremen's Parks and destination places
- Updated playground structures that are ADA compliant
- Splash pad/updated pool area and open a little longer
- Inclusive amenities for all ages
- Make Bremen a "destination" place
- State of the art facilities
- Nature style parks
- Lights for soccer fields
- An amphitheater like in Culver and Plymouth



7



Priority Action Program

This chapter provides the framework for “how” the Town of Bremen plans to achieve the community’s aspirations with an actionable plan that addresses the major challenges of its parks and recreation system. The priority action program was developed by the Steering Committee by going through the “How” portion of the “Wow, Now” activity. Using the outcomes collected from the quantitative and qualitative methods to know of the major needs, the Steering Committee was able to think through “how” the Town will address these major challenges. MACOG worked with the Steering Committee to frame the list of major challenges into goals and then brainstorm the action strategies that achieves the goals.

The major challenges were framed into the following four goals.

1. Actively communicate and market the vision for Bremen’s parks and recreation system
2. Offer high quality staffing services and equipment
3. Plan for a diverse offering of programs and services
4. Connecting the community to its natural amenities

The Steering Committee next went through an exercise to prioritize the action strategies to have the most impact in improving Bremen’s parks and recreation system in the next five years. These priorities were included in a second public input survey for residents to have another opportunity to provide their input by selecting the top three priorities they would like to see implemented in the next five years. Results of the second survey are provided in the Appendix. Following the second survey, the Steering Committee identified an implementation effort for each strategy to have a better understanding of when a strategy could be implemented in terms of effort and cost. This is shown in the Priority Action Schedule.

PRIORITY ACTION SCHEDULE

The following is the Priority Action Schedule identified by the Steering Committee and residents as the top priorities to improve Bremen’s parks and recreation system and are organized by the four goals. Following the priority action schedule is the complete list of the action strategies that could also be considered for implementation to adapt to the ever-evolving community needs.

Priority Action Schedule

| Action Item | Timeframe | Responsibility | Costs | Funding Source | Low Cost/ Low Effort | Low Cost/ High Effort | High Cost/ Low Effort | High Cost/ High Effort |
|---|-----------|--|-------|----------------|----------------------|-----------------------|-----------------------|------------------------|
| Actively Communicate and Market the Vision for Bremen’s Parks and Recreation System | | | | | | | | |
| Create a landing page on the Town’s website for all parks information with an updated calendar of events and links for programming information. | 6 months | Town of Bremen & Web developers | TBD | General Fund | | X | | |
| Continue collaborating with the Bremen Schools’ administration and athletics staff to share resources and facilities. | Ongoing | Town of Bremen Park Superintendent and Bremen School Athletic Director | Time | TBD | X | | | |

Priority Action Schedule (Cont.)

| Action Item | Timeframe | Responsibility | Costs | Funding Source | Low Cost/ Low Effort | Low Cost/ High Effort | High Cost/ Low Effort | High Cost/ High Effort |
|--|-----------|---|------------|---|-------------------------|--------------------------|--------------------------|---------------------------|
| Offer High Quality Staffing Services and Equipment | | | | | | | | |
| Increase the Town's fiscal support to add an additional full-time park staff member who will coordinate offering in-house park programming and events. | 18 months | Town Council | \$80-90K | General Fund | | | | X |
| Conduct an external review of ADA compliance for Bremen's parks and recreational facilities and develop an action plan to address its findings. | 2024 | Parks Board, Park Superintendent, Consultant, & ADA Coordinator | TBD | General Fund & Marshall County Community Foundation | | | | X |
| Renovate the Aquatics Facilities through the Marshall County Stellar Program and expand program offerings to increase attendance. | 2024 | Town Council, Parks Board, & Park Superintendent | \$2.5-\$3M | OCRA Regional Stellar Grant, General Fund, & TIF | | | | X |

Priority Action Schedule (Cont.)

| Action Item | Timeframe | Responsibility | Costs | Funding Source | Low Cost/ Low Effort | Low Cost/ High Effort | High Cost/ Low Effort | High Cost/ High Effort |
|--|--------------|---|-------|----------------|----------------------|-----------------------|-----------------------|------------------------|
| Plan for a Diverse Offering of Programs and Services | | | | | | | | |
| Encourage local civic groups to maximize the use of parks facilities by hosting additional community events. | Ongoing | New Park Staff Member, Parks Board, & Park Superintendent | N/A | - | X | | | |
| Establish a Friends of the Park volunteer group to organize local advocates of the Bremen parks and recreation system and equip them with a mechanism to help them improve it. | 6 months | Park Superintendent & Volunteers | N/A | - | | X | | |
| Connecting the Community to its Natural Amenities | | | | | | | | |
| Improve all types of signage in the Bremen's parks system to better guide park visitors (i.e. include wayfinding signs, park rules, and park entrance signs). | 18-24 months | Parks Board, Park Superintendent, Town Council, & IMPA | TBD | IMPA | | | | X |
| Add dedicated bike lanes to Woodie's Lane, Grant Street, and South Stewart Street to link Sunnyside Park to Shumaker Westside Park. | 2022 | Parks Board, Street Superintendent, & Town Council | TBD | General Fund | X | | | |

ALL OTHER ACTION STRATEGIES

GOAL

Actively communicate and market the vision for Bremen's parks and recreation system

- Annually engage residents on their desired programs and park enhancements to be aware of the evolving community's needs. (Low Cost/Low Effort)
- Make Bremen a "destination" place by highlighting the existing programs and facilities to a wider county and regional audience. (Low Cost/Low Effort)
- Promote the new canoe/kayak launch at Shumaker Westside Park to town and county residents to build Bremen's image as a destination for recreation. (Low Cost/Low Effort)
- Promote parks programming on the new electronic sign at the corner of SR 331/Bowen Avenue and Plymouth Street. (Low Cost/Low Effort)

GOAL

Offer High Quality Staffing Services and Equipment

- Create and finalize a job description highlighting the park superintendent's role. (Low Cost/Low Effort)
- Create a job description for the new full-time staff member to coordinate community programs, events, and recreation leagues. (Low Cost/Low Effort)
- Partner with the Town Council to explore opportunities to increase fiscal capacity to add a new park staff member and programs. (Low Cost/High Effort)
- Promote the use of native plants that require minimal maintenance and multi-purpose type facilities to reduce staffing and maintenance costs. (Low Cost/Low Effort)
- Explore the feasibility to repurpose underutilized athletic sports fields and programs to look for innovative community partnerships (i.e. establish a joint-use partnership with Bremen Schools for use of the athletic sports fields and improved logistics). (High Cost/High Effort)
- Look for opportunities to include up-and-coming sports into the permanent facilities fabric of the parks system (i.e. permanent pickleball courts). (High Cost/High Effort)
- Maintain and enhance park amenities such as bathrooms, drinking fountains, benches, landscaping, lighting, and equipment. (Low Cost/High Effort)
- Install Bremen's first fully accessible playground and begin addressing handicap accessibility issues at Bremen's parks. (High Cost/Low Effort)

- Explore the feasibility to construct a community amphitheater. (High Cost/High Effort)
- Promote the use of native plants that require minimal maintenance and multi-purpose type facilities to reduce staffing and maintenance costs. (Low Cost/Low Effort)

GOAL

Plan for a Diverse Offering of Programs and Services

- Organize a Young Adult Sports League for the young adults and professionals (20-30 years old) population in Bremen. (Low Cost/High Effort)
- Promote the sledding hill at Shadyside Park as a winter destination activity. (Low Cost/Low Effort)
- Promote Winter Events in the parks system for year-round family fun. (Low Cost/High Effort)
- Explore the programming and advertising of a Cross Country Skiing Course event. (Low Cost/High Effort)

GOAL

Connecting the Community to its Natural Amenities

- Link Shumaker Westside Park to Shadyside Park alongside the northern railroad tracks and along the Yellow River. (High Cost/High Effort)
- Link Shadyside Park to Sunnyside Park alongside the Yellow River and the northern railroad tracks and SR 106. (High Cost/High Effort)

IMPLEMENTATION & FUNDING OPPORTUNITIES

Non-Reverting Capital Funds

Non-reverting capital funds can be created by the County to assist with property acquisition or for specific capital improvements. These funds are provided by the sale of properties, equipment, or special user fees established by the Parks Board as a county park and recreation system becomes more established.

Non-Reverting Operational Funds

Non-reverting operational funds can be used for appropriations done by the Parks Board for operational expenditures. These funds are provided from program and event fees, sale of merchandise, or special user fees established by the Parks Board as a county park and recreation system becomes more established.

Parks Donation Account

A donation account can be created by the Parks Board to accept public donations specifically to fund park improvements.

GRANT PROGRAMS

Indiana Department of Natural Resources (IDNR)

Land & Water Conservation Fund (LWCF)

The LWCF is a state match grant that provides 50 percent of the costs for land acquisition to expand park property, and/or development of parks and recreational facilities upon project approval.

IDNR Recreational Trails Program

The RTP is an 80 percent state funds/20 percent local match grant used for the development of multi-use trails up to \$200,000.

IDNR Lakes and Rivers Enhancement Program (LARE)

This is a grant opportunity used to protect and enhance aquatic habitats for fish and wildlife while allowing publicly accessible waterways to be used for recreational and other use.

IDNR Division of Forestry

The Indiana Division of Forestry provides grants for community and urban forestry programs. This can be used to inventory the County's forests, develop management plans, and tree plantings. Grants range from \$2,000 to \$20,000 and require either a cash match or in-kind contributions.

Indiana Office of Community and Rural Affairs (OCRA)

Community Development Block Grants (CDBG)

OCRA oversees the allocation of federal CDBG funds for community development projects including the planning and construction of public facilities and Main Street revitalization. Under the Public Facilities Program, a community can apply for up to a grant award of \$500,000 and requires a local match of 10 percent of the total project cost.

Quick Impact Placebased (QulP) Grant

QulP is designed to fund small-scale projects that make a quick community enhancement and transformation of underutilized spaces to spark community conversation and creativity. This grant encourages the establishment and strengthening of the partnership between the County, residents, community groups and organizations, and businesses. Grant requests must be between \$2,500 and \$5,000 and have a local match of either cash, in-kind contributions, or a combination of both.

Indiana Housing and Community Development Authority

Patronicity CreatINg Places Grant

The CreatINg Places grant is a crowd-source funding mechanism that communities can apply and submit a project campaign that seeks public donations. IHCD will match the dollars raised for successful campaigns up to \$50,000.

Indiana Native Plant Society (INPS)

INPS offers grants to communities that promote the appreciation, preservation, conversation, utilization, and studies of Indiana's native flora. Additional considerations go to communities that educate their residents on the values and environmental importance of indigenous vegetation.

Marshall County Community Foundation

The Marshall County Community Foundation is a nonprofit organization that supports new and existing programs of nonprofit organizations through grant distributions to financially support quality of life, public art, and other community development projects for Marshall County communities. The Marshall County Parks Board can look into building partnerships with the foundation and applying for grants.

Lilly Endowment

The Lilly Foundation is a nonprofit organization that financially supports community facilities and programs that advances a county's economic development and quality of life opportunities.

A



Appendix - Public Input

The development of Bremen’s 2022-2026 Park Master Plan was built on the foundation of community engagement. This ensured a community-based planning process that empowered and equipped the community to create a plan reflective of the community’s major needs and aspirations. Engagement efforts included two public input surveys, conducting stakeholder interviews, connecting with residents and visitors at the Bremen Fireman’s Festival, posting promotional materials at public facilities and downtown businesses, and using Bremen Parks and Recreation Department’s Facebook page.

These engagement activities allowed residents and stakeholders to share their BIG IDEAS for Bremen’s parks and recreation system and create a priority action program to guide the Bremen Parks’ Boards efforts over the next five years. Following the completion of the second input survey, residents were given another opportunity to review and comment on the draft plan between February 7, 2022, to February 22, 2022. Residents were able to hear a presentation during the Bremen Town Council’s meeting on February 14, 2022. Residents were able to share their input by submitting their comments using the online comment form, printed copies of the form were also available at Town Hall, or post their comments on Bremen Parks and Recreation Facebook page. We received six public comments.

This appendix summarizes the public input of the results from the two input surveys and the submitted comments during the public comment period in February 2022.

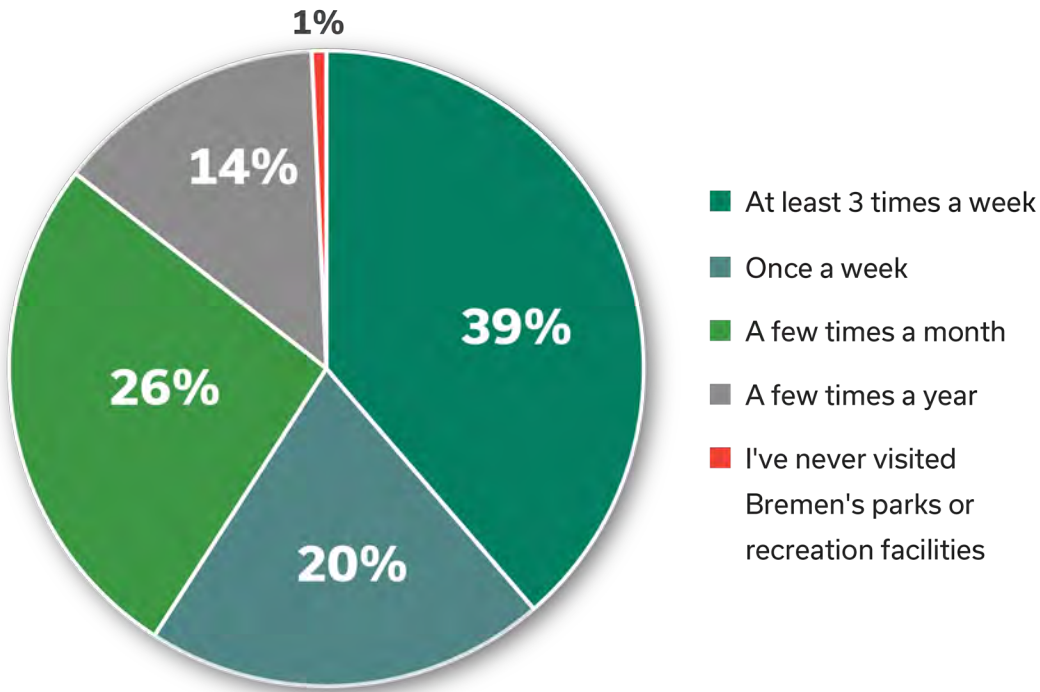
PUBLIC INPUT SURVEY #1 SUMMARY OF THE RESULTS

The first public input survey was available at the forefront of the planning process from June 14th to July 15th, 2021. There were 271 online surveys completed, representing approximately 6 percent of Bremen residents. This is similar to other planning surveys in the region and above the general threshold of 5 percent for input surveys. Utilizing the Fireman’s Festival as well as social media efforts such as Facebook, the survey had a wide range of responses from a diverse range of the town’s residents.

This survey allowed the community to share what they desired as BIG IDEAS for Bremen’s parks and recreation system, their favorite park features and rating, identify new amenities they would like to see developed, and their top three priorities the Town should prioritize for future implementation. The following charts summarize the results for each of the questions.

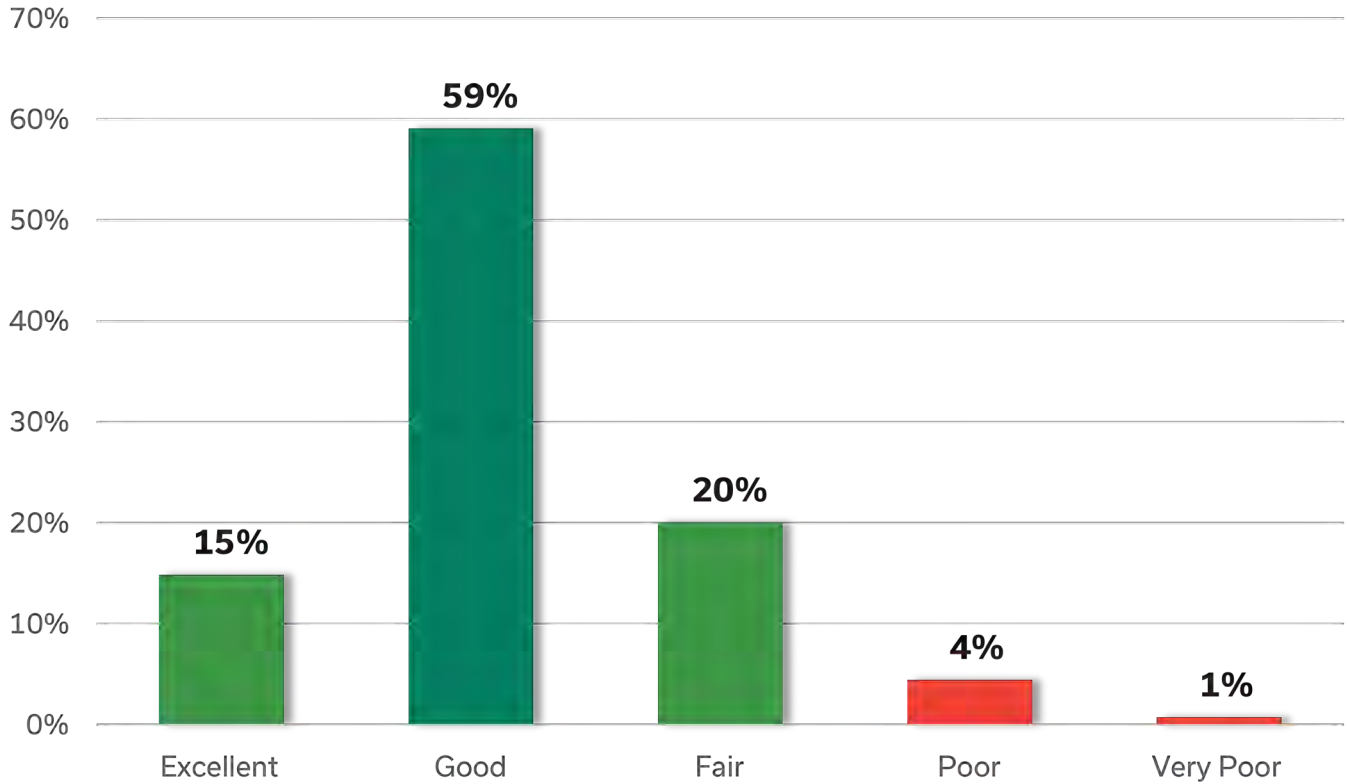
Visiting Bremen’s Parks & Recreation Amenities

How often do you visit Bremen’s parks and/or recreation facilities?

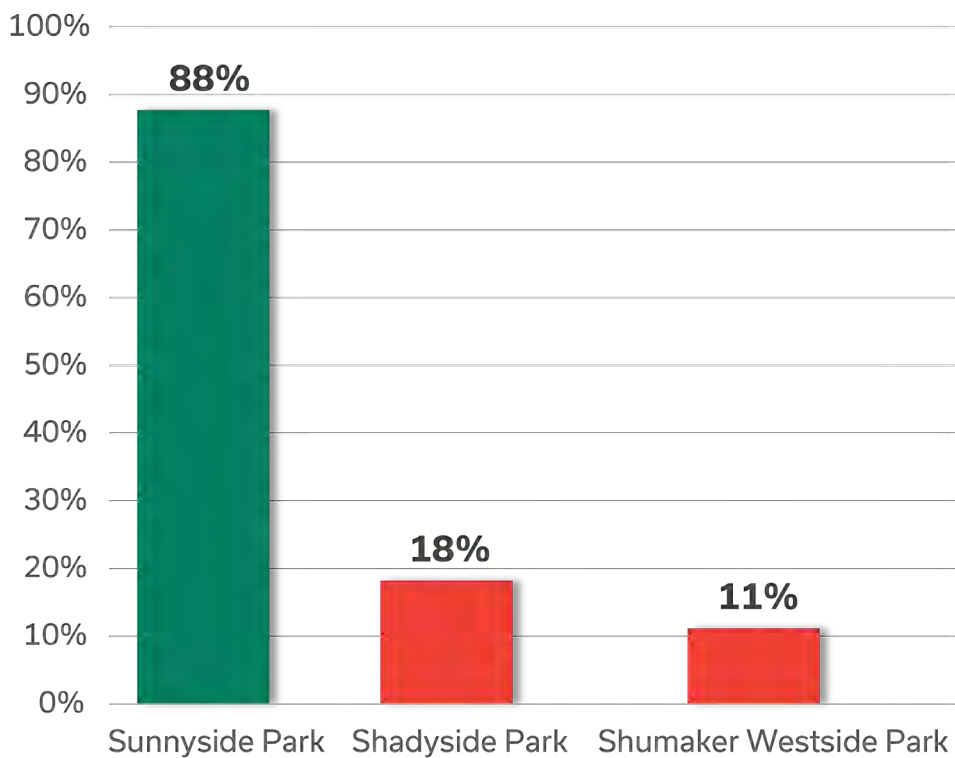


Visiting Bremen's Parks & Recreation Amenities

Overall, how would you rate Bremen's parks and recreation?

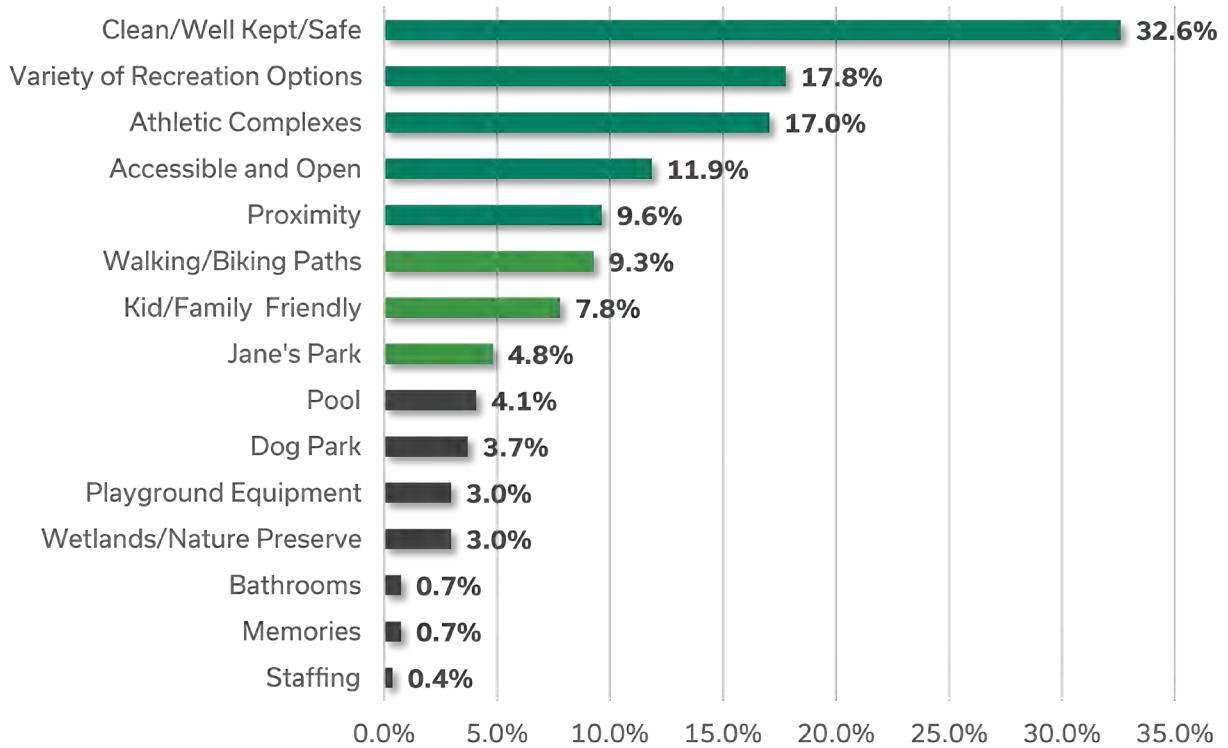


Which park do you visit?

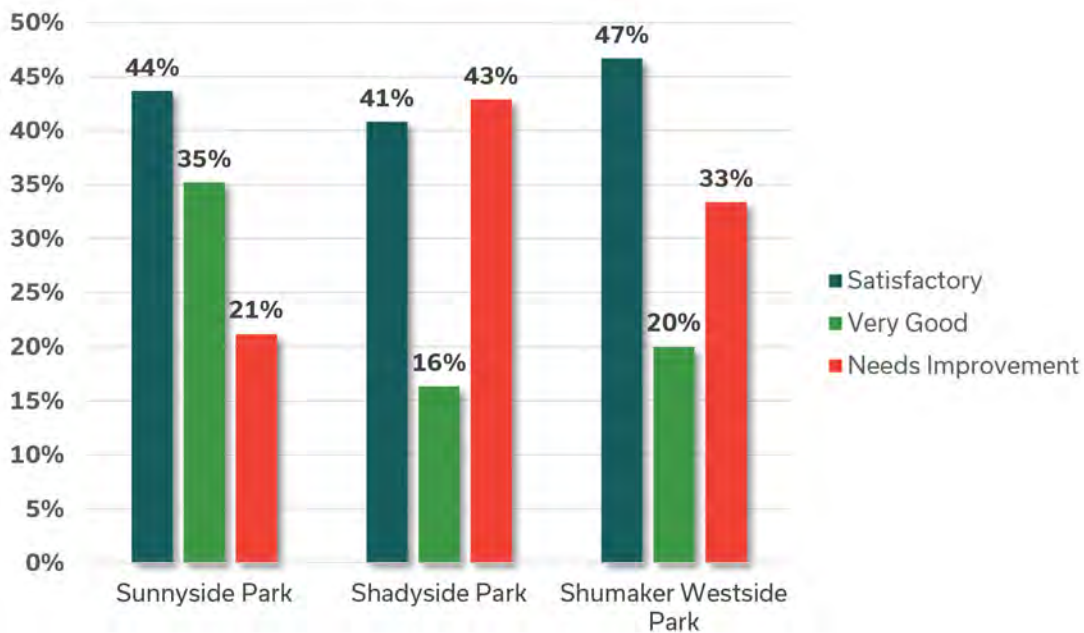


Visiting Bremen's Parks & Recreation Amenities

What are your favorite features of the park you visited?

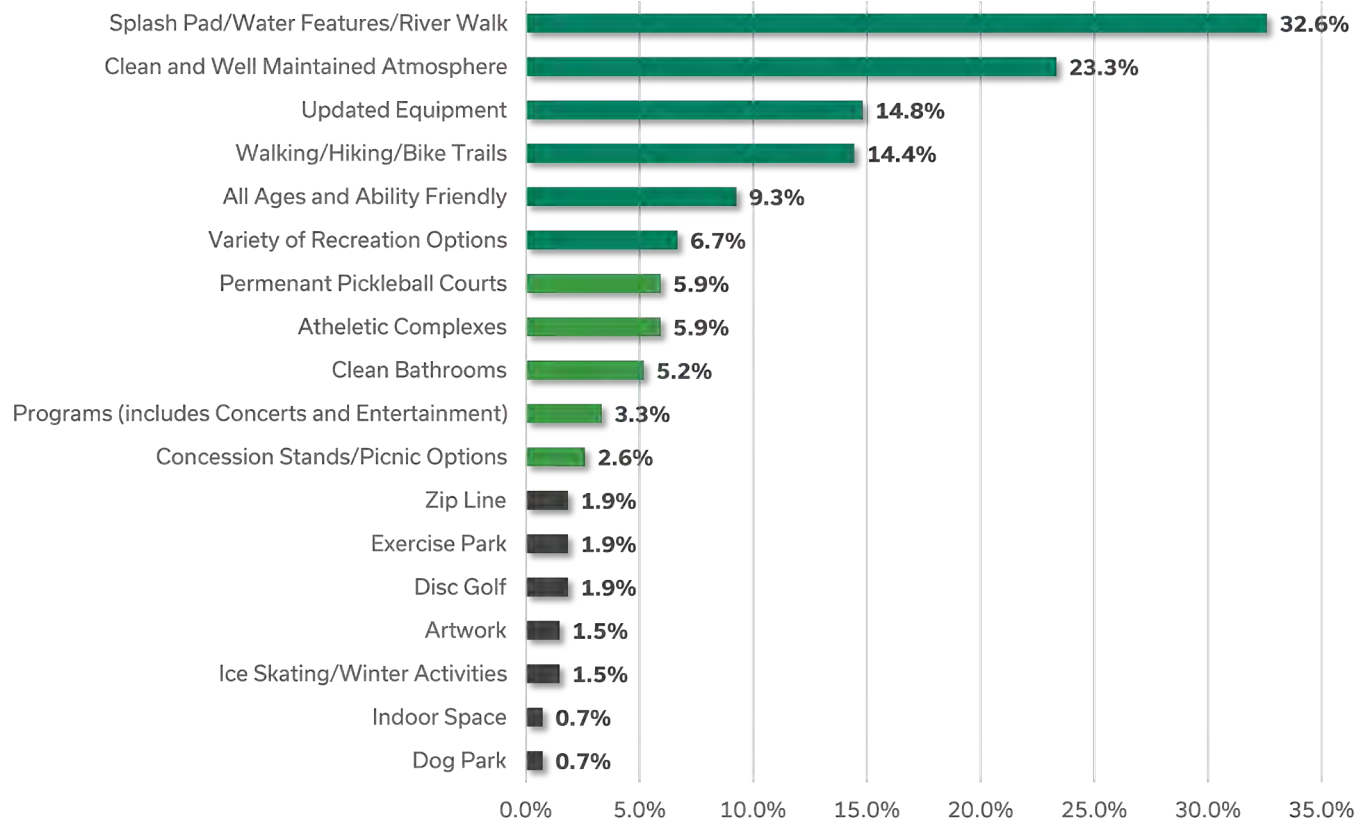


What is your rating of the park you visited?



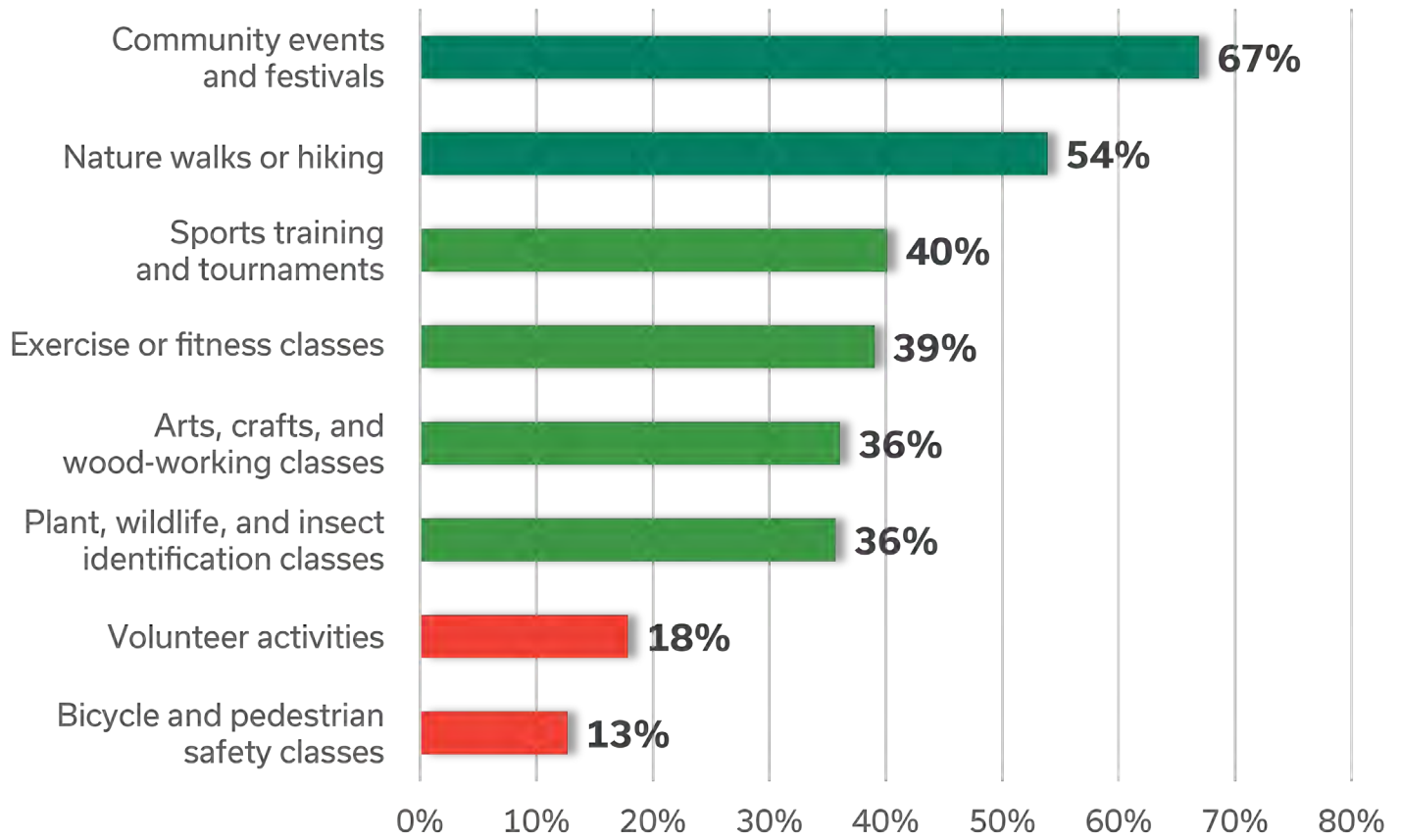
Comparing Bremen's Parks and Recreation

Think about a park that you loved visiting outside of Bremen. What did you love about that park?



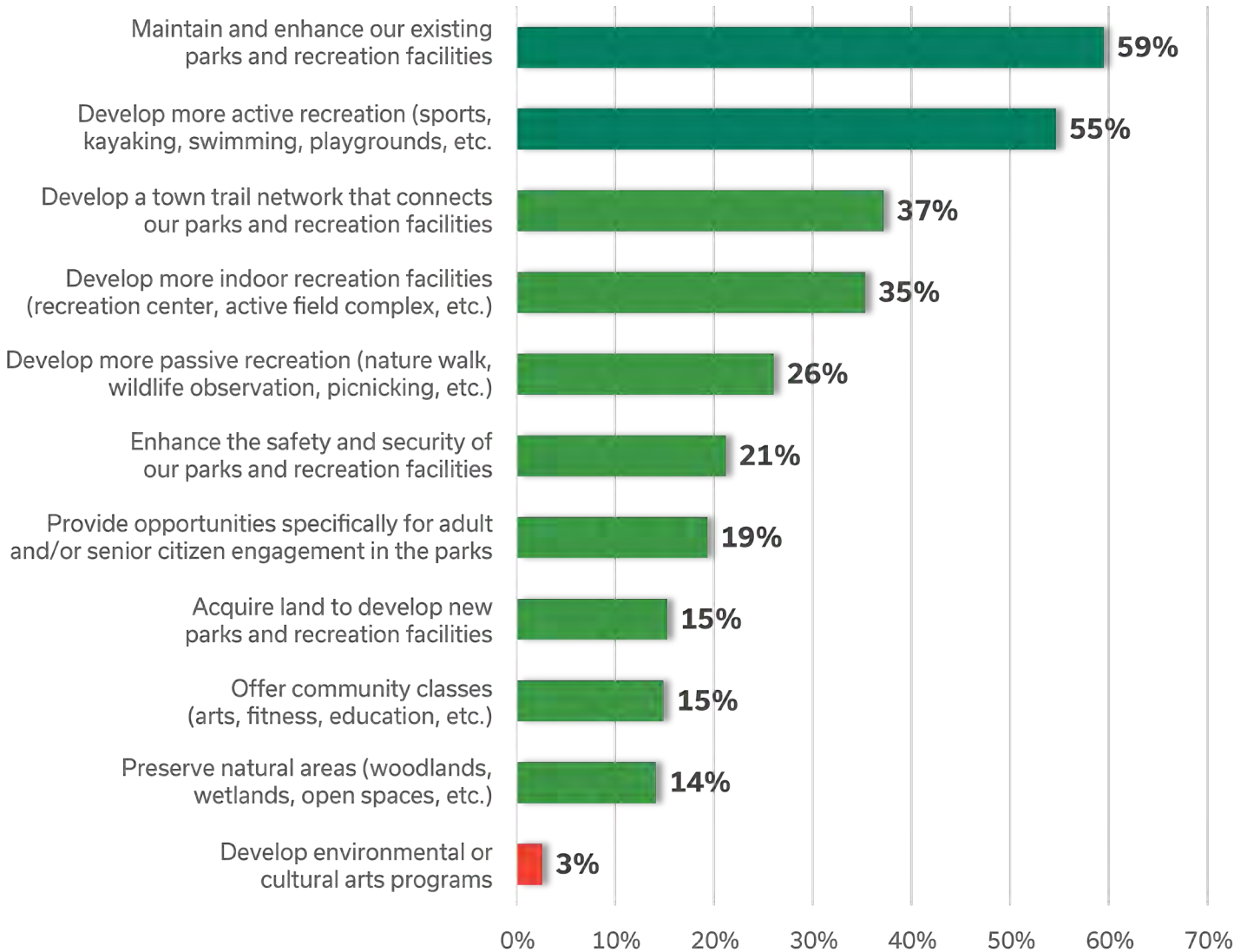
Comparing Bremen's Parks and Recreation

Which of the following would you like to see offered or increased in our parks?
(Select all that applies)



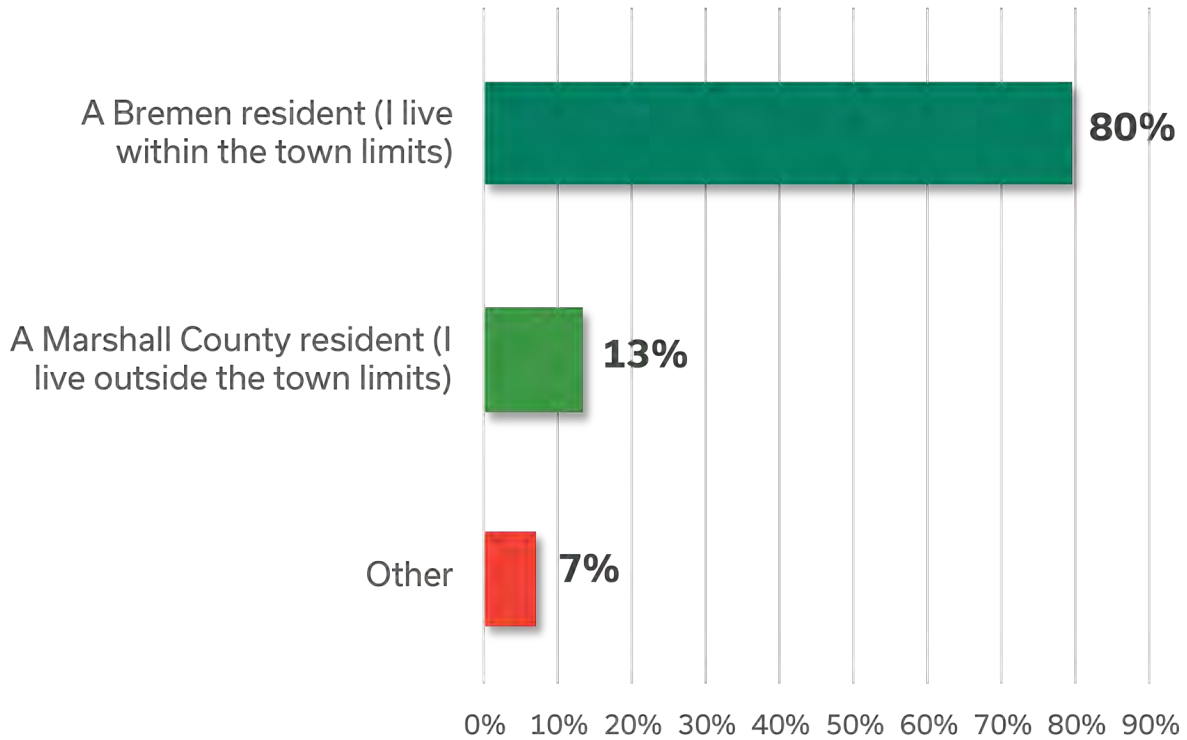
Comparing Bremen's Parks and Recreation

What are your top 3 priorities that you think Bremen should prioritize for future implementation?

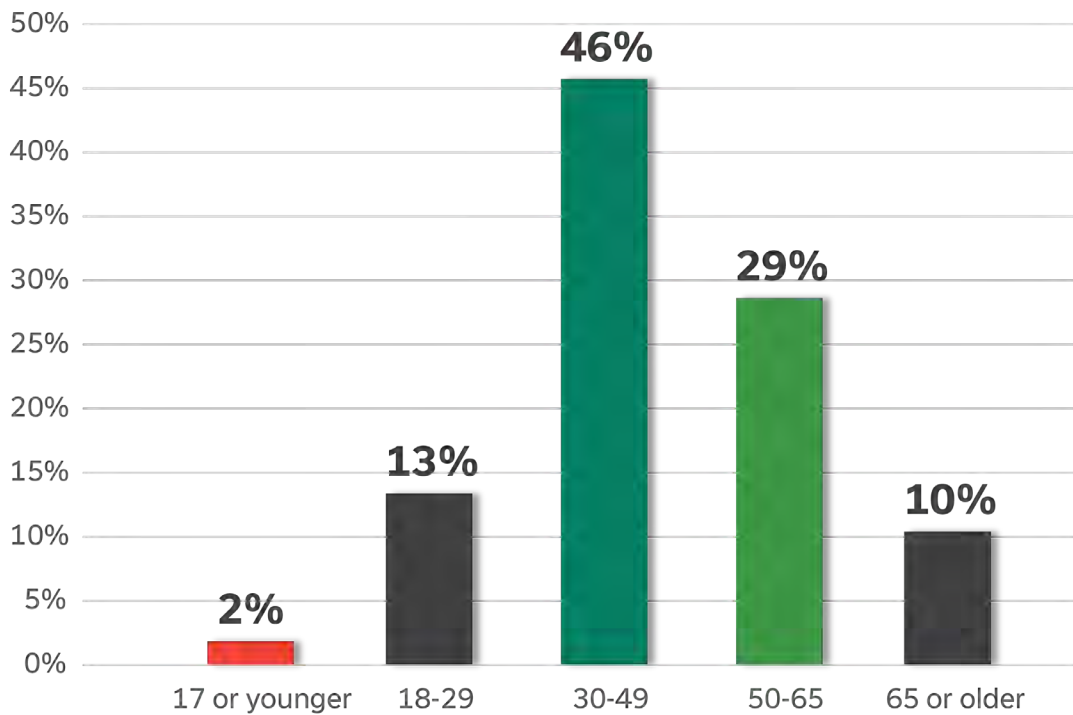


About You

Which of the following best describes you?

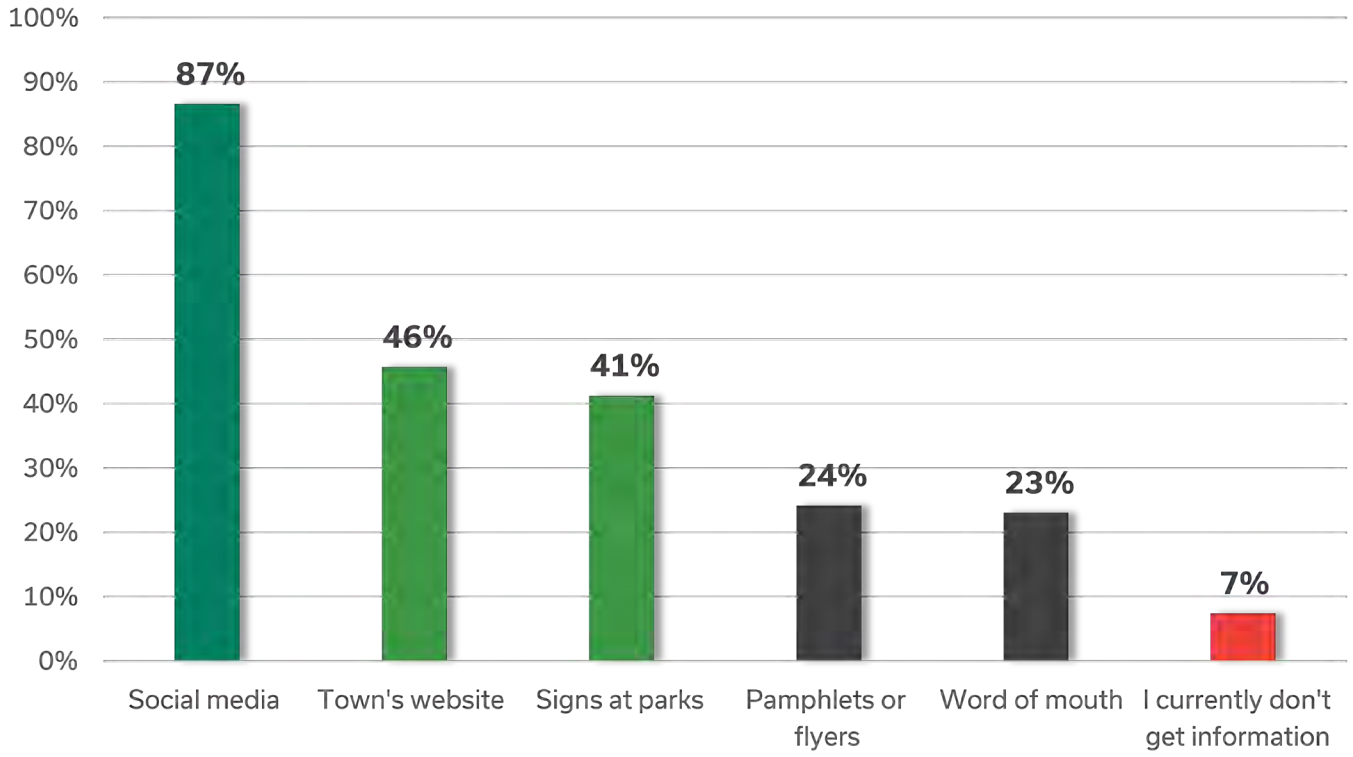


Which of the following best describes your age?



About You

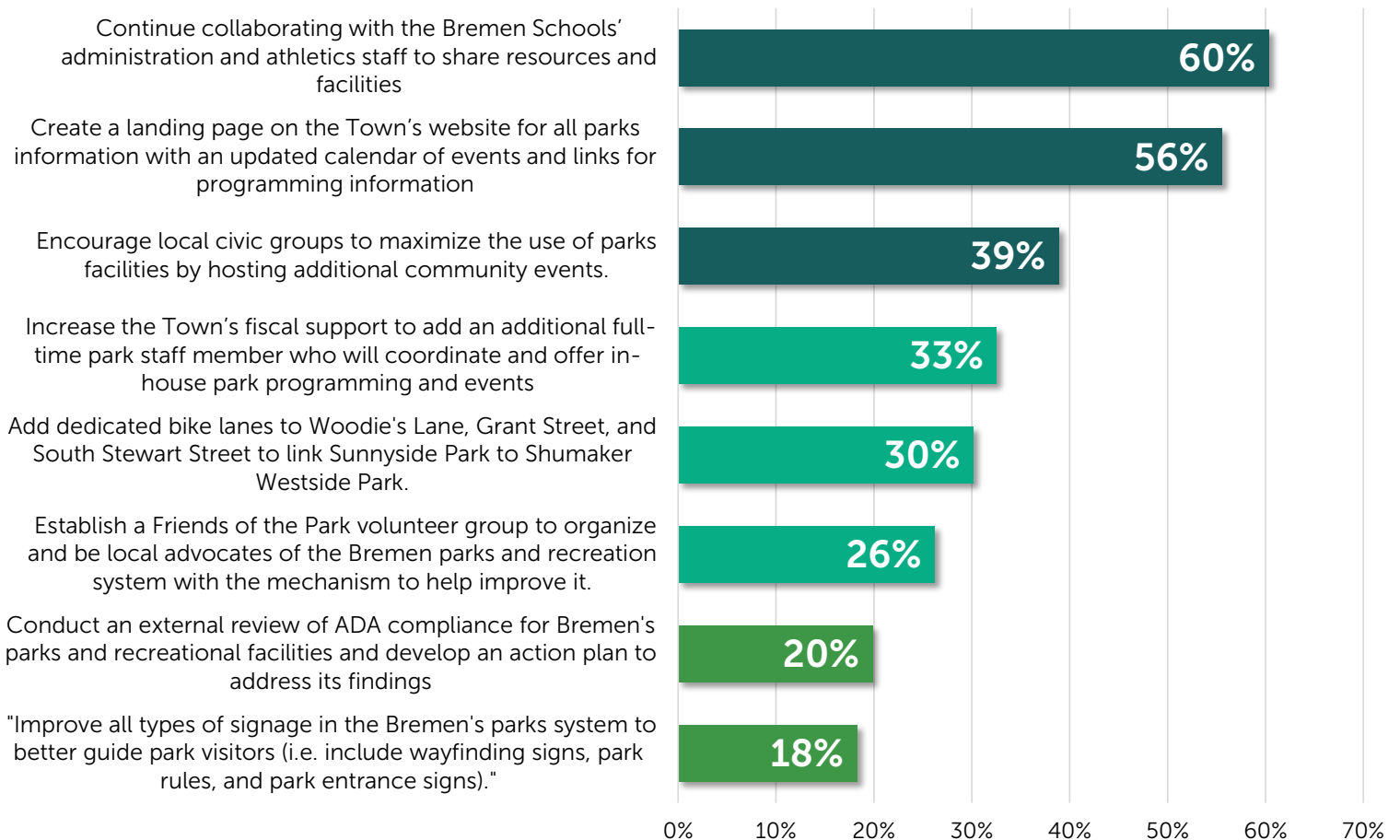
How would you like to get notified of community events and activities? (Select all that apply)



PUBLIC INPUT SURVEY #2 SUMMARY OF THE RESULTS

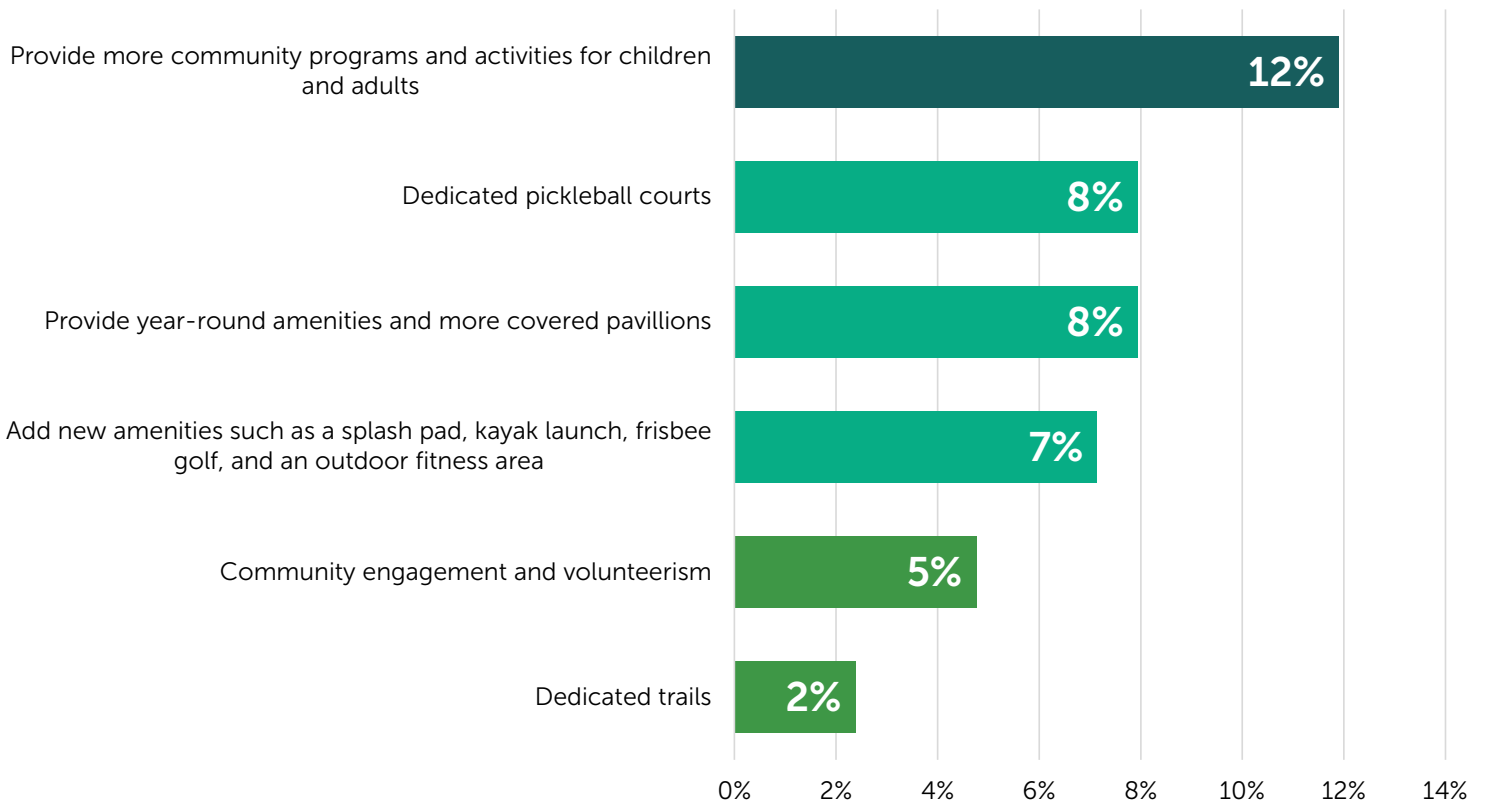
A second public input survey was available through January 2022 that provided another opportunity for the Bremen community to share their BIG IDEAS of Bremen's park and recreation system. This survey asked the community to prioritize the short-term priorities they would like to see the Town implement in the next five years. The survey was available to fill out online, and paper surveys were available at Town Hall. Notifications of the survey were posted at downtown businesses, Town Hall, the Bremen Parks and Recreation Department's webpage, and Facebook page. We received input from 126 residents who responded online, representing approximately three (3) percent of Bremen's population. No paper surveys were returned to Town Hall. The charts below summarize the responses for each of the questions.

Top Priorities for High Quality Parks and Recreation in Bremen



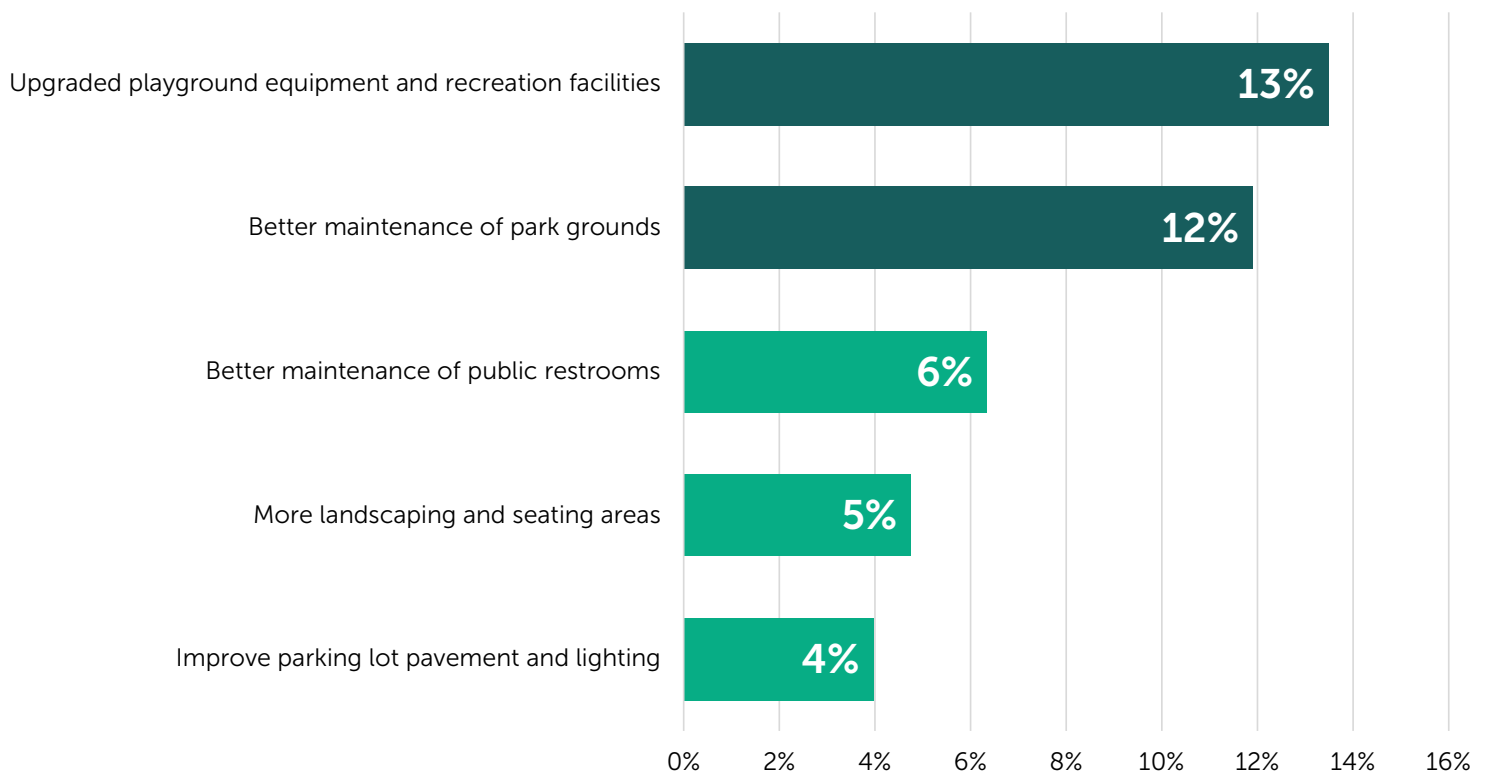
Additional Ideas to Implement in Bremen's Parks & Recreation

Residents were given the opportunity to write in additional ideas they would like to see implemented in Bremen's parks and recreation system. The chart below summarizes the common responses. The majority of participants stated they would like to see more community programs and activities for all age groups. The next common responses included having dedicated pickleball courts, year-round amenities, and new amenities such as a splash pad, kayak launch, frisbee golf, and an outdoor fitness area. Lower responses included volunteerism and having dedicated trails or walking paths connecting the parks.



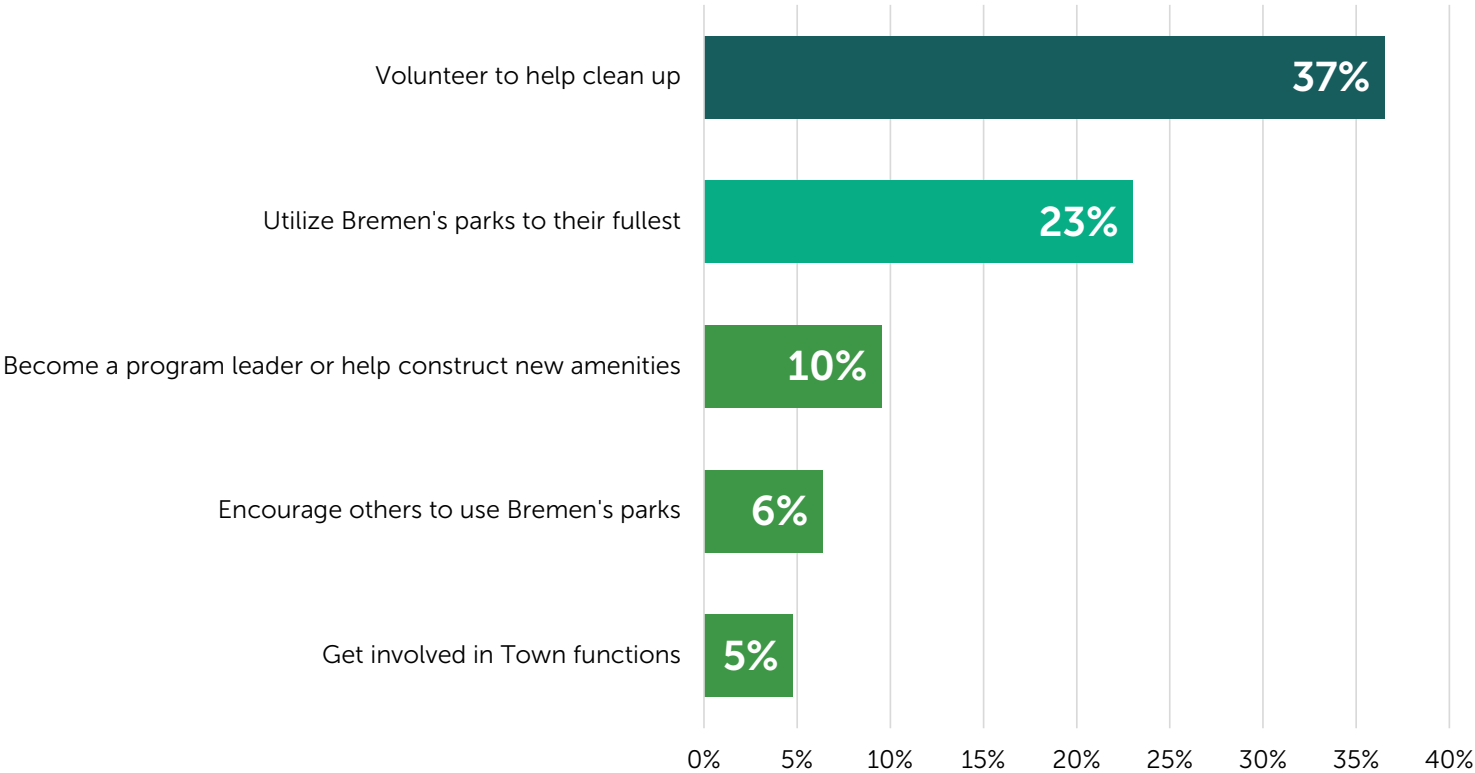
Additional Ideas to Implement in Bremen's Parks & Recreation

In addition of sharing new ideas to be implemented, residents shared aspects of Bremen's parks and recreation system they thought could be improved. Those responses were summarized in the chart below. The majority of participants expressed they thought the playground equipment and recreation facilities could be upgraded and improve maintenance of the park grounds. The next highest response was improving the maintenance of the public restrooms, add more landscaping and seating areas near the parks, and lastly, improve the parking lot surfaces and lighting.



What Residents can do to Improve Bremen's Parks & Recreation

The last question on the survey gave participants the opportunity to share what they could do to improve Bremen's parks and recreation. This provided a more personal approach for participants to think about ways they could contribute to give back to their community. The common responses were summarized into the chart below. Many participants shared that they would be willing to volunteer to help with clean up efforts and the second highest common response was to actively use Bremen's parks. Lower common responses included leading a new program or help construct new amenities, be an advocate to encourage others to use Bremen's parks, and lastly, be more involved with general Town functions to know what's happening in their community.



Summary of Public Comments

| February 7, 2022 - February 22, 2022 Public Comments | | | | | |
|--|---|--|---|---|---|
| Date | Submitted By | What do you love about the plan? What strategy excites you most for the future? | What did you learn from reviewing the plan? | What would you change about the plan or strategies presented? | Additional Comments or Questions |
| 2/16/2022 | Anonymous, Submitted on the online comment form | | | Pool should have been paired with the school so it could be used year-round rather than 8 weeks. This was a waste of our tax dollars! | |
| 2/16/2022 | Stacey Marsh, Submitted on the online comment form | Great vision, focus on inclusion and leveraging the town feedback. | I learned about the demographics of the town. | It's well thought out and makes sense. | On page 19 there was info on a Marshall county effort to link other trails. I realize that's outside your scope, but, how would we get info on this? |
| 2/16/2022 | Brenda Gaston, Submitted on the Bremen Parks & Recreation Facebook Page | | | | Congratulation Bremen! Love the effort and plans for offering diverse programs and services. I'm on the Parks Board in Cumberland - working on our 5-year PMP implementation! |
| 2/16/2022 | Don Harrison, Submitted on the Bremen Parks & Recreation Facebook Page | | | | Very thorough! |

February 7, 2022 - February 22, 2022 Public Comments

| Date | Submitted By | What do you love about the plan? What strategy excites you most for the future? | What did you learn from reviewing the plan? | What would you change about the plan or strategies presented? | Additional Comments or Questions |
|-----------|---|--|---|---|----------------------------------|
| 2/17/2022 | Aria Gaines, Submitted on the Bremen Parks & Recreation Facebook Page | | | | Looking forward to the trails! |
| 2/17/2022 | Donny Aleo, Submitted on the Bremen Parks & Recreation Facebook Page | | | | Awesome! |

PUBLIC INPUT SURVEY PRESS RELEASE



NEWS RELEASE

For Immediate Release, June 10, 2021

PARTICIPATE IN BREMEN PARK MASTER PLAN SURVEY

BREMEN, Indiana – The Bremen Park and Recreation Department has started the planning process to update its 5-year parks master plan. The updated plan will help the Town establish a cohesive vision, address today’s challenges, and identify priorities that enhance the Town’s parks and recreation system.

This Plan will not be successful or meaningful unless it reflects the goals and aspirations of the users of Bremen’s parks and recreational amenities! The Bremen Park and Recreation Department wants to hear your ideas of what recreational amenities you think are missing and would like to see added in Bremen and what future improvements you think the Town should focus on over the next five years. One of the ways you can participate is to fill out this brief Bremen Parks Master Plan Survey at tiny.cc/BremenParksPlan.

“The Bremen Parks Master Plan is an important document that establishes a long-term vision guiding future activities and development of the town’s park and recreational facilities,” states Jeff Byrd, Vice-President of the Bremen Park Board. “Our hope is that the public will take the time to complete this short survey to ensure that the core ideas and needs of the community can be captured within the Park Master Plan.”

We encourage you to follow us on Facebook [@BremenParksandRecreation](https://www.facebook.com/BremenParksandRecreation) to stay informed of future parks and recreation events. If you would like more information or have comments, please contact Donny Ritsema with MACOG at dritsema@macog.com or 574-287-1829, ext. 503.

###

For additional information, contact MACOG at (574) 287-1829.



NEWS RELEASE

For Immediate Release, February 8, 2022

BREMEN SEEKS INPUT ON THE PARKS MASTER PLAN

Bremen, Indiana – Over the last year, the Bremen Parks and Recreation Department has been working on updating its 5-year park master plan and has prepared a draft and need your input once more! The draft plan provides a framework to guide the Town's Parks Department and Parks Board on the identified priorities to enhance Bremen's parks and recreation amenities for the next five years. Your input is strongly encouraged and is a vital component as this is another opportunity to learn about the plan and share your comments!

The Bremen Parks and Recreation Department kicked off the planning process in May 2021 and has since sought residents' input to ensure the updated plan reflects the needs and aspirations of Bremen's residents. The project steering committee issued two public input surveys during the planning process. The first survey inquired about what residents love about Bremen's parks, what amenities they would like to see included in Bremen, and what opportunities they saw for improvement. Recently, the steering committee issued a second public input survey to hear residents' support of the strategies they would like to see implemented in the next five years. The first public input survey was available online and by paper from June 10, 2021, to July 30, 2021. The Town received input from 274 residents who shared their BIG IDEAS for their ideal park system! The second public input survey was available online and by paper from January 7, 2022, to January 28, 2022. The Town received input from 126 residents who shared the top three strategies they would like to see implemented as well as what they can do to support Bremen's parks and recreation.

"Regularly updating the park master plan is important to help drive the future for our amazing park system," says Brian Main, Bremen Parks and Recreation Department Superintendent. "Community feedback and ownership is important because ultimately our parks exist for our residents and visitors; we want to ensure they're relevant over the next five years and meet our community's needs. In addition to guiding us moving forward, the park master plan will make us eligible for additional grant funding in the future. I couldn't be more excited to see the final plan and continue working on moving our park system forward!" The draft Bremen Park Master Plan is ready for public review!

This plan will not be successful or meaningful unless it reflects the goals and aspirations of the users of Bremen's parks and recreational amenities! Visit Bremen's Parks and Recreation Department's website at <https://www.townofbremen.com/parks-department> or <http://tinyurl.com/BremenParksMasterPlan> to review the draft Plan or hard copies are available at the Bremen Town Hall. You may submit your comments until February 22, 2022, at 4:00 PM using the online form, <http://tiny.cc/Bremen5YrParksPlan>.

If you need assistance filling out the form or other questions related to the park master plan, please contact Donny Ritsema with MACOG at dritsema@macog.com or 574-287-1829, extension 503. We encourage you to follow us on Facebook [@BremenParksandRecreation](https://www.facebook.com/BremenParksandRecreation) to stay informed of future parks and recreation events!

###

For additional information, contact MACOG at (574) 287-1829.

Bremen

2022 - 2026

PARKS MASTER PLAN